

ABflo® 610 Rabbit anti-Human/Monkey CD64/FcγRI mAb

Catalog No.: A27882

Basic Information

Observed MW

Calculated MW

43kDa/39kDa

Category

Primary antibody

Applications

FC

Cross-Reactivity

Human, Cynomolgus

CloneNo number

ARC53680

Conjugate

ABflo® 610. Ex:421nm. Em:612nm.

Background

This gene encodes a protein that plays an important role in the immune response. This protein is a high-affinity Fc-gamma receptor. The gene is one of three related gene family members located on chromosome 1.

Recommended Dilutions

FC 5 µl per 10⁶ cells in
100 µl volume

Immunogen Information

Gene ID

Hu 2209 Cyon 102147198

Swiss Prot

P12314

Immunogen

Recombinant protein (or fragment). This information is considered to be commercially sensitive.

Synonyms

CD64; FCG1; FCRI; CD64A; FCGR1; IGFR1; FcγRI

Contact

 | 400-999-6126

 | cn.market@abclonal.com.cn

 | www.abclonal.com.cn

Product Information

Source

Rabbit

Isotype

IgG

Purification

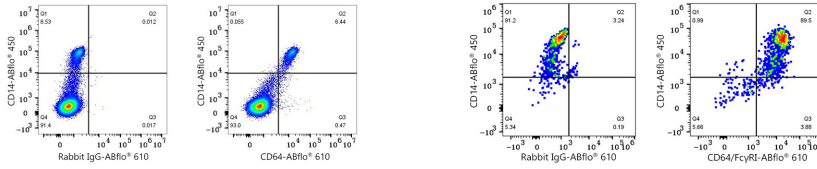
Affinity purification

Storage

Store at 2-8°C. Avoid freeze.

Buffer: PBS with 0.09% Sodium azide, 0.2% BSA, pH7.3.

Validation Data



Flow cytometry: 1×10^6 Human PBMC were surface-stained with ABflo® 450 Rabbit anti-Human/Monkey CD14 mAb (A25196, 5 μ l/Test) and ABflo® 610 Rabbit IgG isotype control (A25826, 5 μ l/Test, left) or ABflo® 610 Rabbit anti-Human/Monkey CD64 mAb (A27882, 5 μ l/Test, right). Cells in the lymphocyte and monocyte gates were used for analysis.

Flow cytometry: 1×10^6 Cynomolgus peripheral blood mononuclear cells were surface-stained with ABflo® 450 Rabbit anti-Human/Monkey CD14 mAb (A25196, 5 μ l/Test) and ABflo® 610 Rabbit IgG isotype control (A25826, 5 μ l/Test, left) or ABflo® 610 Rabbit anti-Human/Monkey CD64/FcγRI mAb (A27882, 5 μ l/Test, right). Cells in the monocyte gate were used for analysis.