

ATF6 Rabbit mAb

Catalog No.: A27877 **Recombinant**

Basic Information

Observed MW

90-100kDa

Calculated MW

75kDa

Category

Primary antibody

Applications

WB,IP,IHC-P,ELISA

Cross-Reactivity

Human

CloneNo number

ARC75670

Background

This gene encodes a transcription factor that activates target genes for the unfolded protein response (UPR) during endoplasmic reticulum (ER) stress. Although it is a transcription factor, this protein is unusual in that it is synthesized as a transmembrane protein that is embedded in the ER. It functions as an ER stress sensor/transducer, and following ER stress-induced proteolysis, it functions as a nuclear transcription factor via a cis-acting ER stress response element (ERSE) that is present in the promoters of genes encoding ER chaperones. This protein has been identified as a survival factor for quiescent but not proliferative squamous carcinoma cells. There have been conflicting reports about the association of polymorphisms in this gene with diabetes in different populations, but another polymorphism has been associated with increased plasma cholesterol levels. This gene is also thought to be a potential therapeutic target for cystic fibrosis.

Recommended Dilutions

WB 1:5000 - 1:10000**IP** 0.5µg-4µg antibody for
200µg-400µg extracts of
whole cells**IHC-P** 1:200 - 1:800**ELISA** Recommended starting
concentration is 1 µg/mL.
Please optimize the
concentration based on
your specific assay
requirements.

Immunogen Information

Gene ID

22926

Swiss Prot

P18850

Immunogen

Recombinant protein (or fragment). This information is considered to be commercially sensitive.

Synonyms

ACHM7; ATF6A

Contact

 | 400-999-6126 | cn.market@abclonal.com.cn | www.abclonal.com.cn

Product Information

Source

Rabbit

Isotype

IgG

Purification

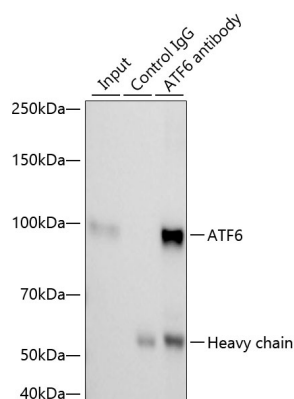
Affinity purification

Storage

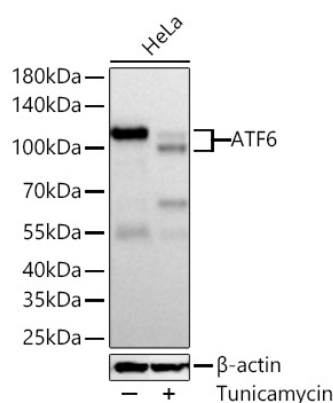
Store at -20°C. Avoid freeze / thaw cycles.

Buffer: PBS with 0.09% Sodium azide, 0.05% BSA, 50% glycerol, pH7.3.

Validation Data



Immunoprecipitation of ATF6 from 300 µg extracts of HeLa cells was performed using 1 µg of ATF6 Rabbit mAb (A27877). Rabbit IgG isotype control (AC005) was used to precipitate the Control IgG sample. IP samples were eluted with 1X reducing Laemmli Buffer. The Input lane represents 10% of the total input. Western blot analysis of immunoprecipitates was conducted using ATF6 Rabbit mAb (A27877) at a dilution of 1:5000.



Western blot analysis of lysates from HeLa cells using [KD Validated] ATF6 Rabbit mAb (A27877) at 1:5000 dilution incubated overnight at 4°C. HeLa cells were treated with Tunicamycin (2 µg/ml) for 1 hours.

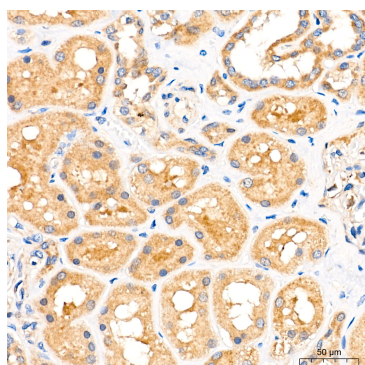
Secondary antibody: HRP-conjugated Goat anti-Rabbit IgG (H+L) (AS014) at 1:10000 dilution.

Lysates/proteins: 30 µg per lane.

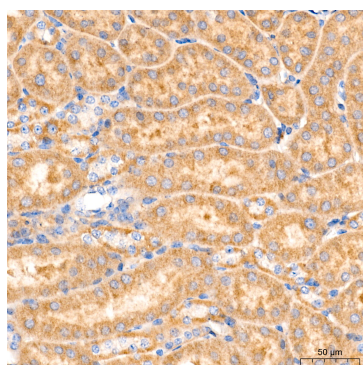
Blocking buffer: 3% nonfat dry milk in TBST.

Detection: ECL Basic Kit (RM00020).

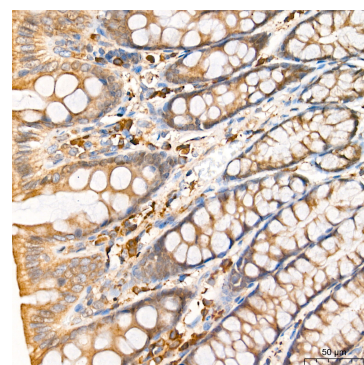
Exposure time: 45s.



Immunohistochemistry analysis of paraffin-embedded Human kidney tissue using ATF6 Rabbit mAb (A27877) at a dilution of 1:500 (40x lens). High pressure antigen retrieval performed with 0.01M Tris-EDTA Buffer (pH 9.0) prior to IHC staining.



Immunohistochemistry analysis of paraffin-embedded Mouse kidney tissue using ATF6 Rabbit mAb (A27877) at a dilution of 1:500 (40x lens). High pressure antigen retrieval performed with 0.01M Tris-EDTA Buffer (pH 9.0) prior to IHC staining.



Immunohistochemistry analysis of paraffin-embedded Rat colon tissue using ATF6 Rabbit mAb (A27877) at a dilution of 1:500 (40x lens). High pressure antigen retrieval performed with 0.01M Tris-EDTA Buffer (pH 9.0) prior to IHC staining.