

ABflo® 450 Rabbit anti-Human CD38 mAb

Catalog No.: A27867

Basic Information

Observed MW

Calculated MW

34kDa

Category

Primary antibody

Applications

FC

Cross-Reactivity

Human

CloneNo number

ARC66216

Conjugate

ABflo® 450. Ex:406nm. Em:445nm.

Background

The protein encoded by this gene is a non-lineage-restricted, type II transmembrane glycoprotein that synthesizes and hydrolyzes cyclic adenosine 5'-diphosphate-ribose, an intracellular calcium ion mobilizing messenger. The release of soluble protein and the ability of membrane-bound protein to become internalized indicate both extracellular and intracellular functions for the protein. This protein has an N-terminal cytoplasmic tail, a single membrane-spanning domain, and a C-terminal extracellular region with four N-glycosylation sites. Crystal structure analysis demonstrates that the functional molecule is a dimer, with the central portion containing the catalytic site. It is used as a prognostic marker for patients with chronic lymphocytic leukemia. Alternative splicing results in multiple transcript variants.

Recommended Dilutions

FC 5 µl per 10⁶ cells in
100 µl volume

Immunogen Information

Gene ID

952

Swiss Prot

P28907

Immunogen

Recombinant protein (or fragment). This information is considered to be commercially sensitive.

Synonyms

ADPRC1; cADPR1; ADPRC 1

Contact

☎ | 400-999-6126

✉ | cn.market@abclonal.com.cn

🌐 | www.abclonal.com.cn

Product Information

Source

Rabbit

Isotype

IgG

Purification

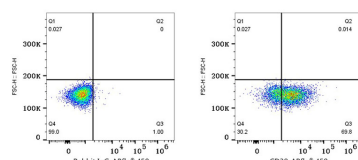
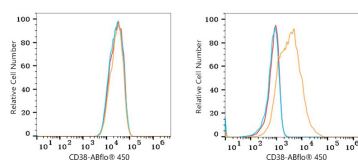
Affinity purification

Storage

Store at 2-8°C. Avoid freeze.

Buffer: PBS with 0.09% Sodium azide, 0.2% BSA, pH7.3.

Validation Data



Flow cytometry: 1×10^6 Hep G2 cells (negative control, left) and Human PBMC (right) were surface-stained with ABflo® 450 Rabbit anti-Human CD38 mAb (A27867, 5 µl/Test, orange line) or ABflo® 450 Rabbit IgG isotype control (A27451, 5 µl/Test, blue line). Non-fluorescently stained cells were used as blank control (red line). Cells in the lymphocyte gate were used for analysis.

Flow cytometry: 1×10^6 Human PBMC were surface-stained with ABflo® 450 Rabbit IgG isotype control (A27451, 5 µl/Test, left) or ABflo® 450 Rabbit anti-Human CD38 mAb (A27867, 5 µl/Test, right). Cells in the lymphocyte gate were used for analysis.