

TASL Rabbit mAb

Catalog No.: A27851 **Recombinant**

Basic Information

Observed MW

34 kDa

Calculated MW

34 kDa

Category

Primary antibody

Applications

WB,Auto WB,IF/ICC,ELISA

Cross-Reactivity

Human

CloneNo number

ARC74757

Background

Involved in positive regulation of innate immune response; positive regulation of toll-like receptor signaling pathway; and regulation of lysosomal lumen pH. Located in endolysosome membrane.

Recommended Dilutions

WB 1:2000 - 1:5000

Auto WB 1:100 - 1:500

IF/ICC 1:100 - 1:200

ELISA Recommended starting concentration is 1 µg/mL. Please optimize the concentration based on your specific assay requirements. For high-ratio antibody dilutions ($\geq 1:10000$) a sequential dilution method is strongly recommended to ensure measurement accuracy.

Immunogen Information

Gene ID

80231

Swiss Prot

Q9HA16

Immunogen

Synthetic peptide. This information is considered to be commercially sensitive.

Synonyms

CXorf21

Product Information

Source

Rabbit

Isotype

IgG

Purification

Affinity purification

Storage

Store at -20°C. Avoid freeze / thaw cycles.

Buffer: PBS containing 50% glycerol and 0.05% BSA, preserved with proclin300 or sodium azide (as specified on the Certificate of Analysis), pH 7.3.

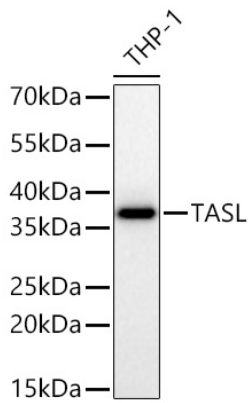
Contact

 | 400-999-6126

 | cn.market@abclonal.com.cn

 | www.abclonal.com.cn

Validation Data



Western blot analysis of lysates from THP-1 cells using TASL Rabbit mAb (A27851) at 1:5000 dilution incubated overnight at 4°C.

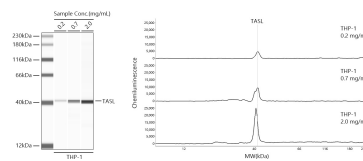
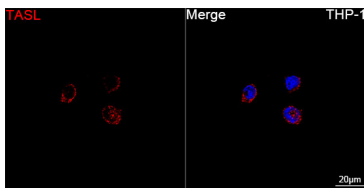
Secondary antibody: HRP-conjugated Goat anti-Rabbit IgG (H+L) (AS014) at 1:10000 dilution.

Lysates/proteins: 25 µg per lane.

Blocking buffer: 3% nonfat dry milk in TBST.

Detection: ECL Basic Kit (RM00020).

Exposure time: 60 s.



Confocal imaging of THP-1 cells using TASL Rabbit mAb (A27851, dilution 1:200) followed by a further incubation with Cy3-conjugated Goat Anti-Rabbit IgG (H+L) (AS007, dilution 1:500) (Red). DAPI was used for nuclear staining (Blue). Objective: 100x.

Simple Western™ analysis of lysates from THP-1 cells using TASL Rabbit mAb (A27851) at 1:100 dilution. The virtual lane view (left) shows the target band (as indicated) with samples in concentrations of 0.2 mg/mL, 0.7 mg/mL and 2.0 mg/mL. The corresponding electropherogram view (right) plots chemiluminescence intensity against molecular weight along the capillary for sample concentrations of 0.2 mg/mL, 0.7 mg/mL and 2.0 mg/mL. This experiment was performed under reducing conditions on the Jess™ Simple Western instrument from ProteinSimple, a BioTechne brand, using the 12-230 kDa separation module.