

ABflo® 450 Rabbit anti-Human CD27 mAb

Catalog No.: A27841

Basic Information

Observed MW

Calculated MW

29kDa

Category

Primary antibody

Applications

FC

Cross-Reactivity

Human

CloneNo number

ARC54542

Conjugate

ABflo® 450. Ex:406nm. Em:445nm.

Background

The protein encoded by this gene is a member of the TNF-receptor superfamily. This receptor is required for generation and long-term maintenance of T cell immunity. It binds to ligand CD70, and plays a key role in regulating B-cell activation and immunoglobulin synthesis. This receptor transduces signals that lead to the activation of NF-kappaB and MAPK8/JNK. Adaptor proteins TRAF2 and TRAF5 have been shown to mediate the signaling process of this receptor. CD27-binding protein (SIVA), a proapoptotic protein, can bind to this receptor and is thought to play an important role in the apoptosis induced by this receptor.

Recommended Dilutions

FC 5 µl per 10⁶ cells in
100 µl volume

Immunogen Information

Gene ID

939

Swiss Prot

P26842

Immunogen

Recombinant protein (or fragment). This information is considered to be commercially sensitive.

Synonyms

T14; S152; Tp55; TNFRSF7; S152. LPFS2

Contact

☎ | 400-999-6126

✉ | cn.market@abclonal.com.cn

🌐 | www.abclonal.com.cn

Product Information

Source

Rabbit

Isotype

IgG

Purification

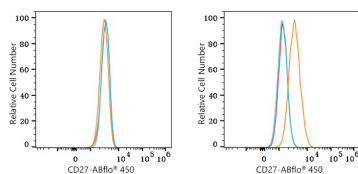
Affinity purification

Storage

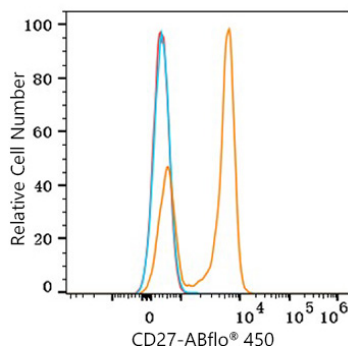
Store at 2-8°C. Avoid freeze.

Buffer: PBS with 0.09% Sodium azide, 0.2% BSA, pH7.3.

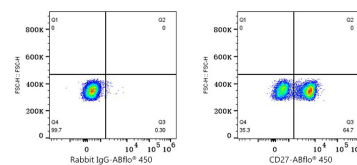
Validation Data



Flow cytometry: 1X10⁶ HEL cells (negative control, left) and Daudi cells (right) were surface-stained with ABflo® 450 Rabbit anti-Human CD27 mAb (A27841, 5 µl/Test, orange line) or ABflo® 450 Rabbit IgG isotype control (A27451, 5 µl/Test, blue line). Non-fluorescently stained cells were used as blank control (red line). Cells in the lymphocyte gate were used for analysis.



Flow cytometry: 1X10⁶ Human PBMC were surface-stained with ABflo® 450 Rabbit anti-Human CD27 mAb (A27841, 5 µl/Test, orange line) or ABflo® 450 Rabbit IgG isotype control (A27451, 5 µl/Test, blue line). Non-fluorescently stained cells were used as blank control (red line). Cells in the lymphocyte gate were used for analysis.



Flow cytometry: 1X10⁶ Human PBMC were surface-stained with ABflo® 450 Rabbit IgG isotype control (A27451, 5 µl/Test, left) or ABflo® 450 Rabbit anti-Human CD27 mAb (A27841, 5 µl/Test, right). Cells in the lymphocyte gate were used for analysis.