

PE/Cyanine7 Rabbit anti-Human CD2 mAb

Catalog No.: A27838

Basic Information

Observed MW

Calculated MW
39kDa

Category
Primary antibody

Applications
FC

Cross-Reactivity
Human

CloneNo number
ARC59333

Conjugate
PE-Cy7. Ex:565nm. Em:778nm.

Background

The protein encoded by this gene is a surface antigen found on all peripheral blood T-cells. The encoded protein interacts with LFA3 (CD58) on antigen presenting cells to optimize immune recognition. A locus control region (LCR) has been found in the 3' flanking sequence of this gene.

Recommended Dilutions

FC 5 µl per 10⁶ cells in
100 µl volume

Immunogen Information

Gene ID	Swiss Prot
914	P06729

Immunogen

Recombinant protein (or fragment). This information is considered to be commercially sensitive.

Synonyms

T11; SRBC; LFA-2

Contact

☎		400-999-6126
✉		cn.market@abclonal.com.cn
🌐		www.abclonal.com.cn

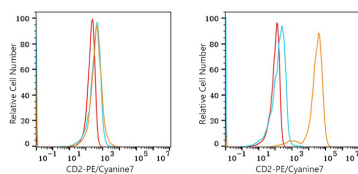
Product Information

Source	Isotype	Purification
Rabbit	IgG	Affinity purification

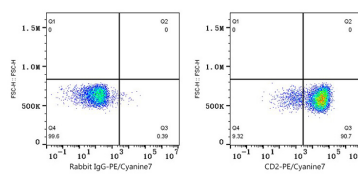
Storage

Store at 2-8°C. Avoid freeze.
Buffer: PBS with 0.09% Sodium azide, 0.2% BSA, pH7.3.

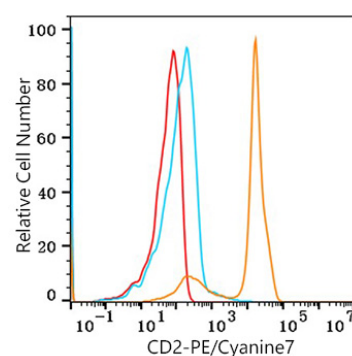
Validation Data



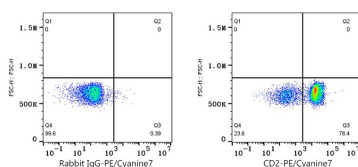
Flow cytometry: 1×10^6 K-562 cells (negative control, left) and Jurkat cells (right) were surface-stained with PE/Cyanine7 Rabbit anti-Human CD2 mAb (A27838, 5 µl/Test, orange line) or PE/Cyanine7 Rabbit IgG isotype control (5 µl/Test, blue line). Non-fluorescently stained cells were used as blank control (red line).



Flow cytometry: 1×10^6 Jurkat cells were surface-stained with PE/Cyanine7 Rabbit IgG isotype control (5 µl/Test, left) or PE/Cyanine7 Rabbit anti-Human CD2 mAb (A27838, 5 µl/Test, right).



Flow cytometry: 1×10^6 Human PBMC were surface-stained with PE/Cyanine7 Rabbit anti-Human CD2 mAb (A27838, 5 µl/Test, orange line) or PE/Cyanine7 Rabbit IgG isotype control (5 µl/Test, blue line). Non-fluorescently stained cells were used as blank control (red line). Cells in the lymphocyte gate were used for analysis.



Flow cytometry: 1×10^6 Human PBMC were surface-stained with PE/Cyanine7 Rabbit IgG isotype control (5 µl/Test, left) or PE/Cyanine7 Rabbit anti-Human CD2 mAb (A27838, 5 µl/Test, right). Cells in the lymphocyte gate were used for analysis.