

ABflo® 450 Rabbit anti-Human cCD3 mAb

Catalog No.: A27836

Basic Information

Observed MW

Calculated MW

23kDa

Category

Primary antibody

Applications

FC (intra)

Cross-Reactivity

Human

CloneNo number

ARC51750

Conjugate

ABflo® 450. Ex:406nm. Em:445nm.

Background

The protein encoded by this gene is the CD3-epsilon polypeptide, which together with CD3-gamma, -delta and -zeta, and the T-cell receptor alpha/beta and gamma/delta heterodimers, forms the T-cell receptor-CD3 complex. This complex plays an important role in coupling antigen recognition to several intracellular signal-transduction pathways. The genes encoding the epsilon, gamma and delta polypeptides are located in the same cluster on chromosome 11. The epsilon polypeptide plays an essential role in T-cell development. Defects in this gene cause immunodeficiency. This gene has also been linked to a susceptibility to type I diabetes in women.

Recommended Dilutions

FC (intra) 5 µl per 10⁶ cells in
100 µl volume

Immunogen Information

Gene ID

916

Swiss Prot

P07766

Immunogen

Synthetic peptide. This information is considered to be commercially sensitive.

Synonyms

T3E; TCRE; IMD18; CD3epsilon

Contact

☎ | 400-999-6126

✉ | cn.market@abclonal.com.cn

🌐 | www.abclonal.com.cn

Product Information

Source

Rabbit

Isotype

IgG

Purification

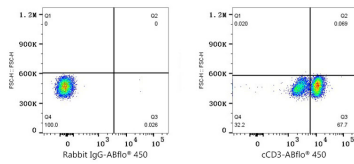
Affinity purification

Storage

Store at 2-8°C. Avoid freeze.

Buffer: PBS with 0.09% Sodium azide, 0.2% BSA, pH7.3.

Validation Data



Flow cytometry: 1X10⁶ Human PBMC were intracellularly-stained with ABflo® 450 Rabbit IgG isotype control (A27451,5 µl/Test,left) or ABflo® 450 Rabbit anti-Human cCD3 mAb (A27836,5 µl/Test,right). Cells in the lymphocyte gate were used for analysis.