

ABflo® 610 Rabbit anti-Human CD7 mAb

Catalog No.: A27835

Basic Information

Observed MW

Calculated MW
25kDa

Category
Primary antibody

Applications
FC

Cross-Reactivity
Human

CloneNo number
ARC54668

Conjugate
ABflo® 610. Ex:421nm. Em:612nm.

Recommended Dilutions

FC 5 µl per 10⁶ cells in
100 µl volume

Background

This gene encodes a transmembrane protein which is a member of the immunoglobulin superfamily. This protein is found on thymocytes and mature T cells. It plays an essential role in T-cell interactions and also in T-cell/B-cell interaction during early lymphoid development.

Immunogen Information

Gene ID 924	Swiss Prot P09564
-----------------------	-----------------------------

Immunogen
Recombinant protein (or fragment). This information is considered to be commercially sensitive.

Synonyms
GP40; TP41; Tp40; LEU-9

Contact

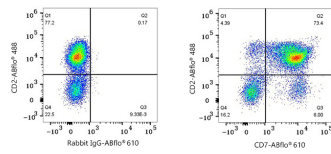
	400-999-6126
	cn.market@abclonal.com.cn
	www.abclonal.com.cn

Product Information

Source Rabbit	Isotype IgG	Purification Affinity purification
-------------------------	-----------------------	--

Storage
Store at 2-8°C. Avoid freeze.
Buffer: PBS with 0.09% Sodium azide, 0.2% BSA, pH7.3.

Validation Data



Flow cytometry: 1×10^6 Human PBMC were surface-stained with ABflo® 488 Rabbit anti-Human CD2 mAb (A23116, 5 μ l/Test) and ABflo® 610 Rabbit IgG isotype control (A25826, 5 μ l/Test, left) or ABflo® 610 Rabbit anti-Human CD7 mAb (A27835, 5 μ l/Test, right). Cells in the lymphocyte gate were used for analysis.