

# PE Rabbit anti-Human CD2 mAb

Catalog No.: A27831

## Basic Information

### Observed MW

### Calculated MW

39kDa

### Category

Primary antibody

### Applications

FC

### Cross-Reactivity

Human

### CloneNo number

ARC59333

### Conjugate

PE. Ex:565nm. Em:574nm.

## Background

The protein encoded by this gene is a surface antigen found on all peripheral blood T-cells. The encoded protein interacts with LFA3 (CD58) on antigen presenting cells to optimize immune recognition. A locus control region (LCR) has been found in the 3' flanking sequence of this gene.

## Recommended Dilutions

FC 5  $\mu$ l per  $10^6$  cells in  
100  $\mu$ l volume

## Immunogen Information

### Gene ID

914

### Swiss Prot

P06729

### Immunogen

Recombinant protein (or fragment). This information is considered to be commercially sensitive.

### Synonyms

T11; SRBC; LFA-2

## Contact

☎ | 400-999-6126

✉ | [cn.market@abclonal.com.cn](mailto:cn.market@abclonal.com.cn)

🌐 | [www.abclonal.com.cn](http://www.abclonal.com.cn)

## Product Information

### Source

Rabbit

### Isotype

IgG

### Purification

Affinity purification

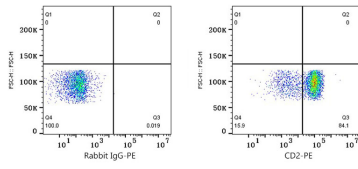
### Storage

Store at 2-8°C. Avoid freeze.

Buffer: PBS with 0.09% Sodium azide, 0.2% BSA, pH7.3.

## Validation Data

---



Flow cytometry: 1X10<sup>6</sup> Human PBMC were surface-stained with PE Rabbit IgG isotype control (A24172,5 µl/Test,left) or PE Rabbit anti-Human CD2 mAb (A27831,5 µl/Test,right). Cells in the lymphocyte gate were used for analysis.