

**[KD Validated] HSP27/HSPB1 Rabbit mAb****Catalog No.: A27821** **Recombinant****Basic Information****Observed MW**

27kDa

**Calculated MW**

23kDa

**Category**

Primary antibody

**Applications**

WB,IP,IF/ICC,IHC-P,ELISA

**Cross-Reactivity**

Human

**CloneNo number**

ARC75566

**Background**

This gene encodes a member of the small heat shock protein (HSP20) family of proteins. In response to environmental stress, the encoded protein translocates from the cytoplasm to the nucleus and functions as a molecular chaperone that promotes the correct folding of other proteins. This protein plays an important role in the differentiation of a wide variety of cell types. Expression of this gene is correlated with poor clinical outcome in multiple human cancers, and the encoded protein may promote cancer cell proliferation and metastasis, while protecting cancer cells from apoptosis. Mutations in this gene have been identified in human patients with Charcot-Marie-Tooth disease and distal hereditary motor neuropathy.

**Recommended Dilutions****WB** 1:10000 - 1:40000**IP** 0.5µg-4µg antibody for  
200µg-400µg extracts of  
whole cells**IF/ICC** 1:100 - 1:200**IHC-P** 1:500 - 1:2000**ELISA** Recommended starting  
concentration is 1 µg/mL.  
Please optimize the  
concentration based on  
your specific assay  
requirements.**Immunogen Information****Gene ID**

3315

**Swiss Prot**

P04792

**Immunogen**

Recombinant protein (or fragment). This information is considered to be commercially sensitive.

**Synonyms**

CMT2F; HMN2B; HSP27; HSP28; Hsp25; SRP27; HS.76067; HEL-S-102

**Product Information****Source**

Rabbit

**Isotype**

IgG

**Purification**

Affinity purification

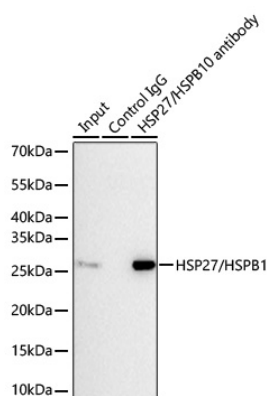
**Storage**

Store at -20°C. Avoid freeze / thaw cycles.

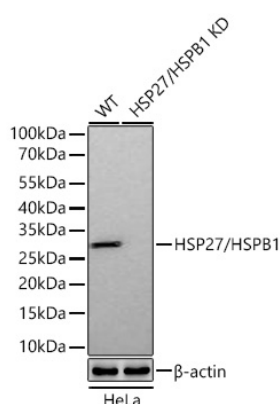
Buffer: PBS with 0.09% Sodium azide, 0.05% BSA, 50% glycerol, pH7.3.

**Contact** | 400-999-6126 | [cn.market@abclonal.com.cn](mailto:cn.market@abclonal.com.cn) | [www.abclonal.com.cn](http://www.abclonal.com.cn)

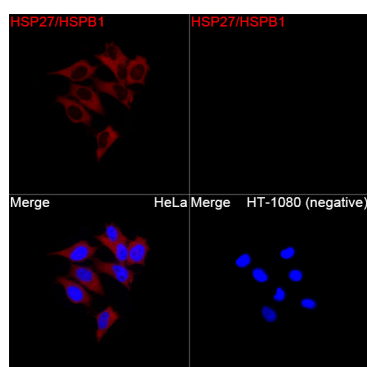
## Validation Data



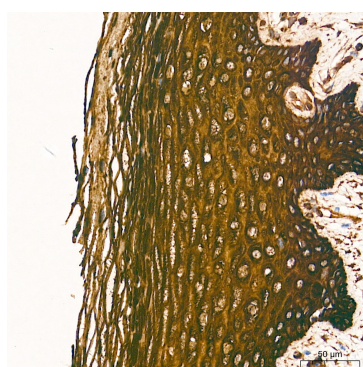
Immunoprecipitation of HSP27/HSPB1 from 300 µg extracts of HeLa cells was performed using 2 µg of [KD Validated] HSP27/HSPB1 Rabbit mAb (A27821). Rabbit IgG isotype control (AC005) was used to precipitate the Control IgG sample. IP samples were eluted with 1X reducing Laemmli Buffer. The Input lane represents 10% of the total input. Western blot analysis of immunoprecipitates was conducted using [KD Validated] HSP27/HSPB1 Rabbit mAb (A27821) at a dilution of 1:5000.



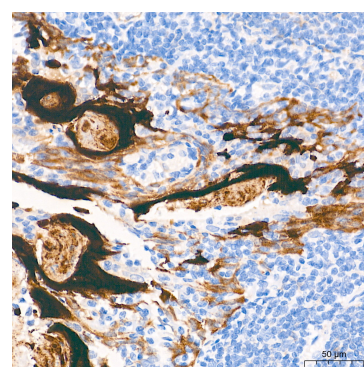
Western blot analysis of lysates from wild type (WT) and HSP27/HSPB1 knockdown (KD) HeLa cells using [KD Validated] HSP27/HSPB1 Rabbit mAb (A27821) at 1:13000 dilution incubated overnight at 4°C. Secondary antibody: HRP-conjugated Goat anti-Rabbit IgG (H+L) (AS014) at 1:10000 dilution. Lysates/proteins: 25 µg per lane. Blocking buffer: 3% nonfat dry milk in TBST. Detection: ECL Basic Kit (RM00020). Exposure time: 1s.



Immunofluorescence analysis of HeLa cells and HT-1080 (negative) cells using [KD Validated] HSP27/HSPB1 Rabbit mAb (A27821) at a dilution of 1:200 (40x lens). Secondary antibody: Cy3-conjugated Goat anti-Rabbit IgG (H+L)(AS007) at 1:500 dilution. Blue: DAPI for nuclear staining.



Immunohistochemistry analysis of paraffin-embedded Human cervix tissue using [KD Validated] HSP27/HSPB1 Rabbit mAb (A27821) at a dilution of 1:600 (40x lens). High pressure antigen retrieval performed with 0.01M Tris-EDTA Buffer (pH 9.0) prior to IHC staining.



Immunohistochemistry analysis of paraffin-embedded Human tonsil tissue using [KD Validated] HSP27/HSPB1 Rabbit mAb (A27821) at a dilution of 1:600 (40x lens). High pressure antigen retrieval performed with 0.01M Tris-EDTA Buffer (pH 9.0) prior to IHC staining.