

PE Rabbit anti-Human CD107a/LAMP1 mAb

Catalog No.: A27807

Basic Information

Observed MW

Refer to figures

Calculated MW

38kDa/45kDa

Category

Primary antibody

Applications

FC (intra)

Cross-Reactivity

Human

CloneNo number

ARC52154

Conjugate

PE. Ex:565nm. Em:574nm.

Recommended Dilutions

FC (intra) 5 μl per 10^6 cells in
100 μl volume

Background

The protein encoded by this gene is a member of a family of membrane glycoproteins. This glycoprotein provides selectins with carbohydrate ligands. It may also play a role in tumor cell metastasis.

Immunogen Information

Gene ID

3916

Swiss Prot

P11279

Immunogen

Recombinant protein (or fragment).This information is considered to be commercially sensitive.

Synonyms

LAMPA; CD107a; LGP120

Contact

☎ | 400-999-6126

✉ | cn.market@abclonal.com.cn

🌐 | www.abclonal.com.cn

Product Information

Source

Rabbit

Isotype

IgG

Purification

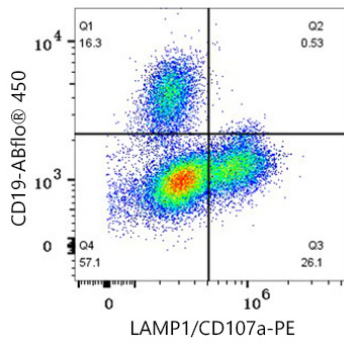
Affinity purification

Storage

Store at 2-8°C. Avoid freeze.

Buffer: PBS with 0.09% Sodium azide,0.2% BSA,pH7.3.

Validation Data



Flow cytometry: 1×10^6 Human PBMC were surface-stained with ABflo® 450 Rabbit anti-Human/Monkey CD19 mAb (A27286, 5 μ l/Test), and then intracellularly-stained with PE Rabbit anti-Human LAMP1/CD107a mAb (A27807, 5 μ l/Test). Cells in the lymphocyte gate were used for analysis.