

TOMM20 Rat mAb

Catalog No.: A27800

Basic Information

Observed MW

16kDa

Calculated MW

16kDa

Category

Primary antibody

Applications

WB,IF/ICC,IHC-P,ELISA

Cross-Reactivity

Human, Mouse, Rat

CloneNo number

ATC50007

Background

Enables protein-transporting ATPase activity and unfolded protein binding activity. Involved in protein targeting to mitochondrion. Located in mitochondria-associated endoplasmic reticulum membrane and mitochondrial outer membrane.

Recommended Dilutions

WB 1:5000 - 1:10000

IF/ICC 1:100 - 1:200

IHC-P 1:500 - 1:2000

ELISA Recommended starting concentration is 1 µg/mL. Please optimize the concentration based on your specific assay requirements.

Immunogen Information

Gene ID

9804

Swiss Prot

Q15388

Immunogen

Recombinant protein (or fragment). This information is considered to be commercially sensitive.

Synonyms

MAS20; MOM19; TOM20

Contact

☎ | 400-999-6126

✉ | cn.market@abclonal.com.cn

🌐 | www.abclonal.com.cn

Product Information

Source

Rat

Isotype

IgG

Purification

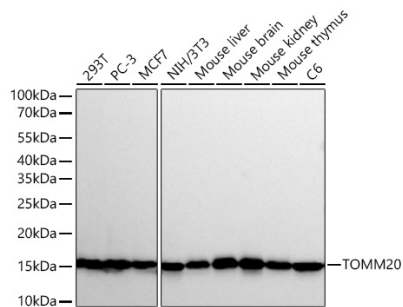
Affinity purification

Storage

Store at -20°C. Avoid freeze / thaw cycles.

Buffer: PBS with 0.09% Sodium azide, 50% glycerol, pH7.3.

Validation Data



Western blot analysis of various lysates using TOMM20 Rat mAb (A27800) at 1:6000 dilution incubated overnight at 4°C.

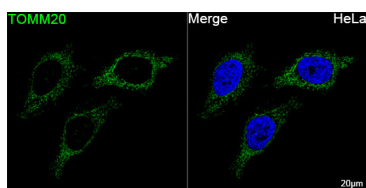
Secondary antibody: HRP-conjugated Goat anti-Rat IgG (H+L) (AS028) at 1:10000 dilution.

Lysates/proteins: 25 µg per lane.

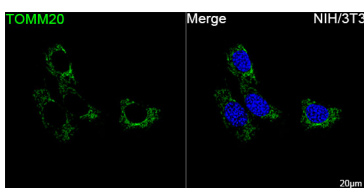
Blocking buffer: 3% nonfat dry milk in TBST.

Detection: ECL Basic Kit (RM00020).

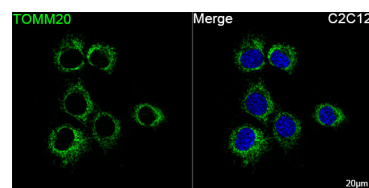
Exposure time: 30s.



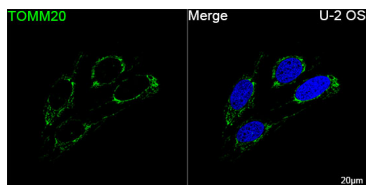
Confocal imaging of HeLa cells using TOMM20 Rat mAb (A27800, dilution 1:200) followed by a further incubation with FITC-conjugated Goat anti-Rat IgG (H+L) (AS019, dilution 1:500) (Green). DAPI was used for nuclear staining (Blue). Objective: 100x.



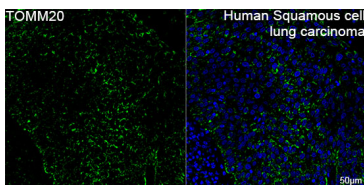
Confocal imaging of NIH/3T3 cells using TOMM20 Rat mAb (A27800, dilution 1:200) followed by a further incubation with FITC-conjugated Goat anti-Rat IgG (H+L) (AS019, dilution 1:500) (Green). DAPI was used for nuclear staining (Blue). Objective: 100x.



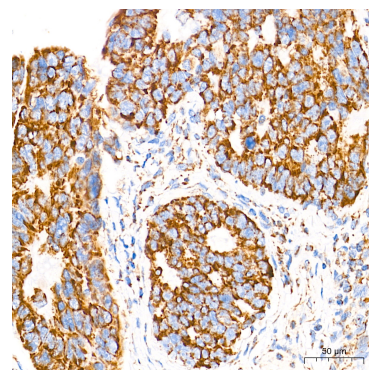
Confocal imaging of C2C12 cells using TOMM20 Rat mAb (A27800, dilution 1:200) followed by a further incubation with FITC-conjugated Goat anti-Rat IgG (H+L) (AS019, dilution 1:500) (Green). DAPI was used for nuclear staining (Blue). Objective: 100x.



Confocal imaging of U-2 OS cells using TOMM20 Rat mAb (A27800, dilution 1:200) followed by a further incubation with FITC-conjugated Goat anti-Rat IgG (H+L) (AS019, dilution 1:500) (Green). DAPI was used for nuclear staining (Blue). Objective: 100x.

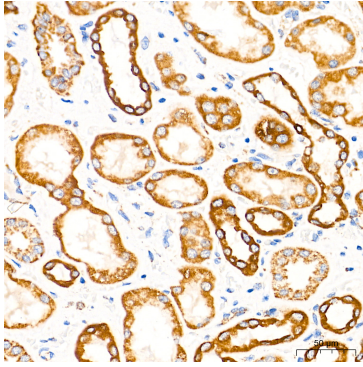


Confocal imaging of paraffin-embedded Human Squamous cell lung carcinoma tissue using TOMM20 Rat mAb (A27800, dilution 1:200) followed by a further incubation with FITC-conjugated Goat anti-Rat IgG (H+L) (AS019, dilution 1:500) (Green). DAPI was used for nuclear staining (Blue). High pressure antigen retrieval performed with 0.01M Citrate Buffer (pH 6.0) prior to IF staining. Objective: 40x.

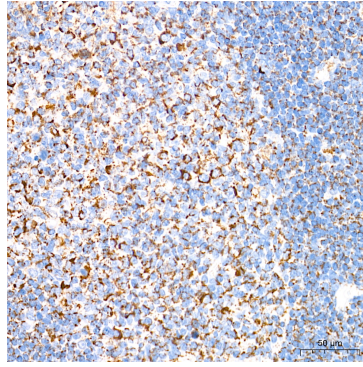


Immunohistochemistry analysis of paraffin-embedded Human colon carcinoma tissue using TOMM20 Rat mAb (A27800) at a dilution of 1:1000 (40x lens). High pressure antigen retrieval performed with 0.01M Tris-EDTA Buffer (pH 9.0) prior to IHC staining.

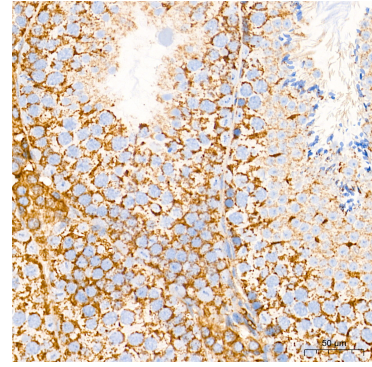
Validation Data



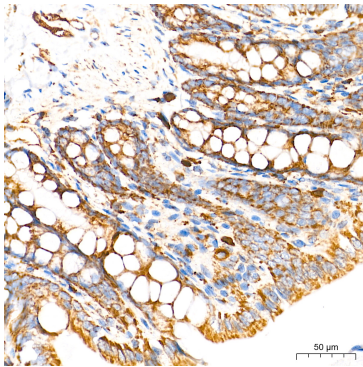
Immunohistochemistry analysis of paraffin-embedded Human kidney tissue using TOMM20 Rat mAb (A27800) at a dilution of 1:1000 (40x lens). High pressure antigen retrieval performed with 0.01M Tris-EDTA Buffer (pH 9.0) prior to IHC staining.



Immunohistochemistry analysis of paraffin-embedded Human tonsil tissue using TOMM20 Rat mAb (A27800) at a dilution of 1:1000 (40x lens). High pressure antigen retrieval performed with 0.01M Tris-EDTA Buffer (pH 9.0) prior to IHC staining.



Immunohistochemistry analysis of paraffin-embedded Mouse testis tissue using TOMM20 Rat mAb (A27800) at a dilution of 1:1000 (40x lens). High pressure antigen retrieval performed with 0.01M Tris-EDTA Buffer (pH 9.0) prior to IHC staining.



Immunohistochemistry analysis of paraffin-embedded Rat colon tissue using TOMM20 Rat mAb (A27800) at a dilution of 1:1000 (40x lens). High pressure antigen retrieval performed with 0.01M Tris-EDTA Buffer (pH 9.0) prior to IHC staining.