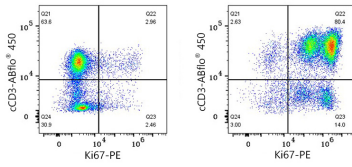
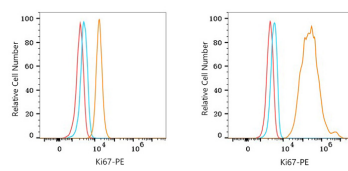




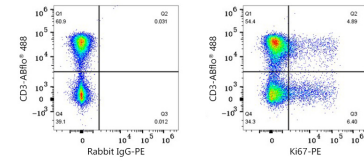
## Validation Data



Flow cytometry:  $1 \times 10^6$  Human PBMC (untreated, left) and Human PBMC (treated with  $5 \mu\text{g/mL}$  PHA for 72 hours, right) were intracellularly-stained with ABflo® 450 Rabbit anti-Human cCD3 mAb (A27836,  $5 \mu\text{l/Test}$ ) and PE Rabbit anti-Human/Monkey Ki67 mAb (A27749,  $5 \mu\text{l/Test}$ ). Cells in the lymphocyte gate were used for analysis.



Flow cytometry:  $1 \times 10^6$  knockout (KO) HeLa cells (negative control, left) and HeLa cells (right) were intracellularly-stained with PE Rabbit anti-Human/Monkey Ki67 mAb (A27749,  $5 \mu\text{l/Test}$ , orange line) or PE Rabbit IgG isotype control (A24172,  $5 \mu\text{l/Test}$ , blue line). Non-fluorescently stained cells were used as blank control (red line).



Flow cytometry:  $1 \times 10^6$  Cynomolgus peripheral blood mononuclear cells were surface-stained with ABflo® 488 Rabbit anti-Human/Monkey CD3 mAb (A26283,  $5 \mu\text{l/Test}$ ) and then intracellularly-stained with PE Rabbit IgG isotype control (A24172,  $5 \mu\text{l/Test}$ , left) or PE Rabbit anti-Human/Monkey Ki67 mAb (A27749,  $5 \mu\text{l/Test}$ , right). Cells in the lymphocyte gate were used for analysis.