

# PE/Cyanine7 Rabbit anti-Human CD5 mAb

Catalog No.: A27724

## Basic Information

### Observed MW

### Calculated MW

55kDa

### Category

Primary antibody

### Applications

FC

### Cross-Reactivity

Human

### CloneNo number

ARC53917

### Conjugate

PE-Cy7. Ex:565nm. Em:778nm.

## Background

This gene encodes a member of the scavenger receptor cysteine-rich (SRCR) superfamily. Members of this family are secreted or membrane-anchored proteins mainly found in cells associated with the immune system. This protein is a type-I transmembrane glycoprotein found on the surface of thymocytes, T lymphocytes and a subset of B lymphocytes. The encoded protein contains three SRCR domains and may act as a receptor to regulate T-cell proliferation. Alternative splicing results in multiple transcript variants encoding different isoforms.

## Recommended Dilutions

FC 0.5 µl per 10<sup>6</sup> cells in  
100 µl volume

## Immunogen Information

### Gene ID

921

### Swiss Prot

P06127

### Immunogen

Recombinant protein (or fragment). This information is considered to be commercially sensitive.

### Synonyms

T1; LEU1

## Contact

☎ | 400-999-6126

✉ | [cn.market@abclonal.com.cn](mailto:cn.market@abclonal.com.cn)

🌐 | [www.abclonal.com.cn](http://www.abclonal.com.cn)

## Product Information

### Source

Rabbit

### Isotype

IgG

### Purification

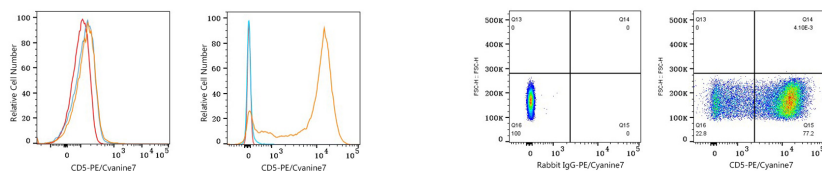
Affinity purification

### Storage

Store at 2-8°C. Avoid freeze.

Buffer: PBS with 0.09% Sodium azide, 0.2% BSA, pH7.3.

## Validation Data



Flow cytometry: 1X10<sup>6</sup> K-562 cells (negative control, left) and Human PBMC (right) were surface-stained with PE/Cyanine7 Rabbit anti-Human CD5 mAb (A27724, 5  $\mu$ l/Test, orange line) or PE/Cyanine7 Rabbit IgG isotype control (5  $\mu$ l/Test, blue line). Non-fluorescently stained cells were used as blank control (red line). Cells in the Lymphocytes gate were used for analysis.

Flow cytometry: 1X10<sup>6</sup> Human PBMC were surface-stained with PE/Cyanine7 Rabbit IgG isotype control (5  $\mu$ l/Test, left) or PE/Cyanine7 Rabbit anti-Human CD5 mAb (A27724, 5  $\mu$ l/Test, right). Cells in the Lymphocytes gate were used for analysis.