

# PE/Cyanine7 Rabbit anti-Mouse CD34 mAb

Catalog No.: A27695

## Basic Information

### Observed MW

### Calculated MW

41kDa

### Category

Primary antibody

### Applications

FC

### Cross-Reactivity

Mouse

### CloneNo number

ARC58336

### Conjugate

PE-Cy7. Ex:565nm. Em:778nm.

## Background

Enables sulfate binding activity. Acts upstream of or within leukocyte migration. Located in cytoplasm; external side of plasma membrane; and extracellular region. Is expressed in several structures, including alimentary system; cardiovascular system; extraembryonic component; genitourinary system; and skin. Orthologous to human CD34 (CD34 molecule).

## Recommended Dilutions

FC ≤0.5 µg per million cells  
in 100 µl volume

## Immunogen Information

### Gene ID

12490

### Swiss Prot

Q64314

### Immunogen

Recombinant protein (or fragment). This information is considered to be commercially sensitive.

### Synonyms

CD34; CD34 molecule; GIG3; MORT1

## Contact

☎ | 400-999-6126

✉ | [cn.market@abclonal.com.cn](mailto:cn.market@abclonal.com.cn)

🌐 | [www.abclonal.com.cn](http://www.abclonal.com.cn)

## Product Information

### Source

Rabbit

### Isotype

IgG

### Purification

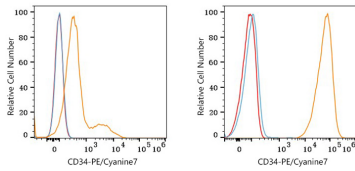
Affinity purification

### Storage

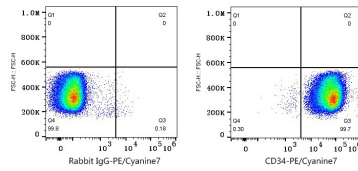
Store at 2-8°C. Avoid freeze.

Buffer: PBS with 0.09% Sodium azide, 0.2% BSA, pH7.3.

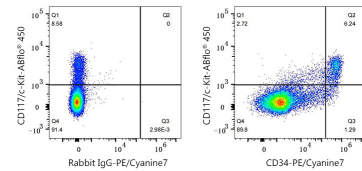
## Validation Data



Flow cytometry:  $1 \times 10^6$  Neuro-2a cells (Low Expression, left) and NIH/3T3 cells (right) were surface-stained with PE/Cyanine7 Rabbit anti-Mouse CD34 mAb (A27695, 0.5  $\mu\text{g}$ , orange line) or PE/Cyanine7 Rabbit IgG isotype control (5  $\mu\text{l}$ /Test, blue line). Non-fluorescently stained cells were used as blank control (red line).



Flow cytometry:  $1 \times 10^6$  NIH/3T3 cells were surface-stained with PE/Cyanine7 Rabbit IgG isotype control (5  $\mu\text{l}$ /Test, left) or PE/Cyanine7 Rabbit anti-Mouse CD34 mAb (A27695, 0.5  $\mu\text{g}$ , right).



Flow cytometry:  $1 \times 10^6$  BALB/c mouse bone marrow cells were surface-stained with ABflo® 488 Rat anti-Mouse CD3 mAb (A27161, 5  $\mu\text{l}$ /Test), FITC anti-Mouse/Human CD45R/B220 (A25655, 5  $\mu\text{l}$ /Test), ABflo® 488 Rabbit anti-Mouse CD11b mAb (A24094, 5  $\mu\text{l}$ /Test), FITC anti-Mouse TER-119 (A25656, 5  $\mu\text{l}$ /Test), ABflo® 488 Rat anti-Mouse Ly-6G/Ly-6C (Gr-1) mAb (A26901, 5  $\mu\text{l}$ /Test), ABflo® 450 Rabbit anti-Mouse CD117/c-Kit mAb (A25474, 5  $\mu\text{l}$ /Test) and PE/Cyanine7 Rabbit IgG isotype control (5  $\mu\text{l}$ /Test, left) or PE/Cyanine7 Rabbit anti-Mouse CD34 mAb (A27695, 0.5  $\mu\text{g}$ , right). Lineage-negative (Lin-) cells (gated using the Mouse Hematopoietic Lineage Antibody Cocktail) were used for analysis.