

ABflo® 647 Rabbit anti-Human PLZF mAb

Catalog No.: A27689

Basic Information

Observed MW

Calculated MW

74kDa

Category

Primary antibody

Applications

FC (intra)

Cross-Reactivity

Human

CloneNo number

ARC71876

Conjugate

ABflo® 647. Ex:648nm. Em:664nm.

Background

This gene is a member of the Krueppel C2H2-type zinc-finger protein family and encodes a zinc finger transcription factor that contains nine Kruppel-type zinc finger domains at the carboxyl terminus. This protein is located in the nucleus, is involved in cell cycle progression, and interacts with a histone deacetylase. Specific instances of aberrant gene rearrangement at this locus have been associated with acute promyelocytic leukemia (APL). Alternate transcriptional splice variants have been characterized.

Recommended Dilutions

FC (intra) 5 µl per 10⁶ cells in
100 µl volume

Immunogen Information

Gene ID

7704

Swiss Prot

Q05516

Immunogen

Recombinant protein (or fragment). This information is considered to be commercially sensitive.

Synonyms

PLZF; ZNF145

Contact

☎ | 400-999-6126

✉ | cn.market@abclonal.com.cn

🌐 | www.abclonal.com.cn

Product Information

Source

Rabbit

Isotype

IgG

Purification

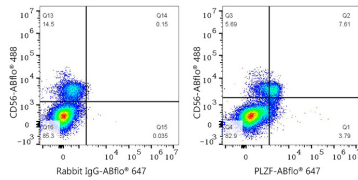
Affinity purification

Storage

Store at 2-8°C. Avoid freeze.

Buffer: PBS with 0.09% Sodium azide, 0.2% BSA, pH7.3.

Validation Data



Flow cytometry: 1×10^6 Human PBMC were surface stained with ABflo® 488 Mouse anti-Human CD56 mAb (A26870, 5 μ l/Test) and then intracellularly-stained with ABflo® 647 Rabbit IgG isotype control (A22070, 5 μ l/Test, left) or ABflo® 647 Rabbit anti-Human PLZF mAb (A27689, 5 μ l/Test, right). Cells in the lymphocyte gate were used for analysis.