

# ABflo® 647 Rabbit anti-Human/Mouse/Monkey FOXP3 mAb

Catalog No.: A27685

## Basic Information

### Observed MW

### Calculated MW

47kDa

### Category

Primary antibody

### Applications

FC (intra)

### Cross-Reactivity

Human, Mouse, Cynomolgus

### CloneNo number

ARC74142

### Conjugate

ABflo® 647. Ex:648nm. Em:664nm.

## Background

The protein encoded by this gene is a member of the forkhead/winged-helix family of transcriptional regulators. Defects in this gene are the cause of immunodeficiency polyendocrinopathy, enteropathy, X-linked syndrome (IPEX), also known as X-linked autoimmunity-immunodeficiency syndrome. Alternatively spliced transcript variants encoding different isoforms have been identified.

## Recommended Dilutions

**FC (intra)**      5 µl per 10<sup>6</sup> cells in  
100 µl volume

## Immunogen Information

### Gene ID

50943

### Swiss Prot

Q9BZS1

### Immunogen

Synthetic peptide. This information is considered to be commercially sensitive.

### Synonyms

JM2; AIID; IPEX; PIDX; XPID; DIETER

## Contact

 | 400-999-6126

 | [cn.market@abclonal.com.cn](mailto:cn.market@abclonal.com.cn)

 | [www.abclonal.com.cn](http://www.abclonal.com.cn)

## Product Information

### Source

Rabbit

### Isotype

IgG

### Purification

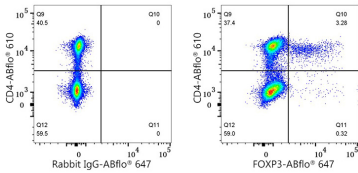
Affinity purification

### Storage

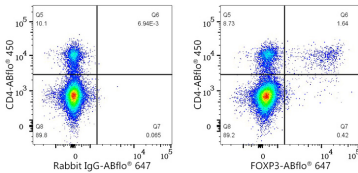
Store at 2-8°C. Avoid freeze.

Buffer: PBS with 0.09% Sodium azide, 0.2% BSA, pH7.3.

# Validation Data



Flow cytometry:1X10<sup>6</sup> Human PBMC were surface-stained with ABflo® 610 Rabbit anti-Human/Monkey CD4 mAb (A26218,5 µl/Test), and then intracellularly-stained with ABflo® 647 Rabbit IgG isotype control (A22070,5 µl/Test,left) or ABflo® 647 Rabbit anti-Human/Mouse FOXP3 mAb (A27685,5 µl/Test,right). Cells in the lymphocyte gate were used for analysis.



Flow cytometry:1X10<sup>6</sup> C57BL/6 mouse splenocytes were surface-stained with ABflo® 450 Rabbit anti-Mouse CD4 mAb (A25941,5 µl/Test) , and then intracellularly-stained with ABflo® 647 Rabbit IgG isotype control (A22070,5 µl/Test,left) or ABflo® 647 Rabbit anti-Human/Mouse FOXP3 mAb (A27685,5 µl/Test,right). Cells in the lymphocyte gate were used for analysis.