

ABflo® 488 Rabbit anti-Human/Mouse/Monkey FOXP3 mAb

Catalog No.: A27684

Basic Information

Observed MW

Calculated MW

47kDa

Category

Primary antibody

Applications

FC (intra)

Cross-Reactivity

Human, Mouse, Cynomolgus

CloneNo number

ARC74142

Conjugate

ABflo® 488. Ex:491nm. Em:516nm.

Background

The protein encoded by this gene is a member of the forkhead/winged-helix family of transcriptional regulators. Defects in this gene are the cause of immunodeficiency polyendocrinopathy, enteropathy, X-linked syndrome (IPEX), also known as X-linked autoimmunity-immunodeficiency syndrome. Alternatively spliced transcript variants encoding different isoforms have been identified.

Recommended Dilutions

FC (intra) 5 µl per 10⁶ cells in
100 µl volume

Immunogen Information

Gene ID

50943

Swiss Prot

Q9BZS1

Immunogen

Synthetic peptide. This information is considered to be commercially sensitive.

Synonyms

JM2; AIID; IPEX; PIDX; XPID; DIETER

Contact

 | 400-999-6126

 | cn.market@abclonal.com.cn

 | www.abclonal.com.cn

Product Information

Source

Rabbit

Isotype

IgG

Purification

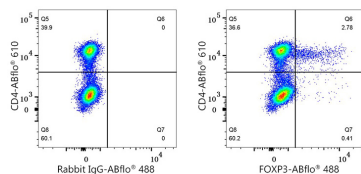
Affinity purification

Storage

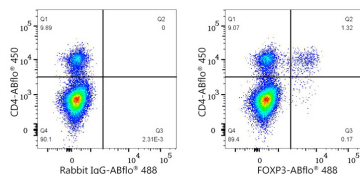
Store at 2-8°C. Avoid freeze.

Buffer: PBS with 0.09% Sodium azide, 0.2% BSA, pH7.3.

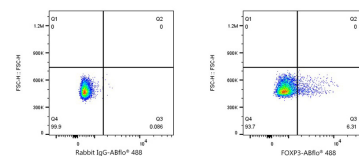
Validation Data



Flow cytometry: 1×10^6 Human PBMC were surface-stained with ABflo® 610 Rabbit anti-Human/Monkey CD4 mAb (A26218, 5 μ l/Test) , and then intracellularly-stained with ABflo® 488 Rabbit IgG isotype control (A22069, 5 μ l/Test, left) or ABflo® 488 Rabbit anti-Human/Mouse FOXP3 mAb (A27684, 5 μ l/Test, right). Cells in the lymphocyte gate were used for analysis.



Flow cytometry: 1×10^6 C57BL/6 mouse splenocytes were surface-stained with ABflo® 450 Rabbit anti-Mouse CD4 mAb (A25941, 5 μ l/Test) , and then intracellularly-stained ABflo® 488 Rabbit IgG isotype control (A22069, 5 μ l/Test, left) or ABflo® 488 Rabbit anti-Human/Mouse FOXP3 mAb (A27684, 5 μ l/Test, right). Cells in the lymphocyte gate were used for analysis.



Flow cytometry: 1×10^6 Cynomolgus PBMC were intracellularly-stained with ABflo® 488 Rabbit IgG isotype control (A22069, 5 μ l/Test, left) or ABflo® 488 Rabbit anti-Human/Mouse/Monkey FOXP3 mAb (A27684, 5 μ l/Test, right). Cells in the CD3+CD4+ T cell gate were used for analysis.