

# ABflo® 488 Rat anti-Mouse Ly-6G mAb

Catalog No.: A27646

## Basic Information

---

**Observed MW**

**Calculated MW**

**Category**

Primary antibody

**Applications**

FC

**Cross-Reactivity**

Mouse

**CloneNo number**

ATC0030

**Conjugate**

ABflo® 488. Ex:491nm. Em:516nm.

## Background

---

Located in external side of plasma membrane.

## Recommended Dilutions

---

**FC** ≤0.25 µg per million cells  
in 100 µl volume

## Immunogen Information

---

**Gene ID**

546644

**Swiss Prot**

P35461

**Immunogen**

Synthetic peptide. This information is considered to be commercially sensitive.

**Synonyms**

Gr1; Gr-1; Ly-6G

## Contact

---

☎ | 400-999-6126

✉ | [cn.market@abclonal.com.cn](mailto:cn.market@abclonal.com.cn)

🌐 | [www.abclonal.com.cn](http://www.abclonal.com.cn)

## Product Information

---

**Source**

Rat

**Isotype**

Rat / IgG2a, kappa

**Purification**

Affinity purification

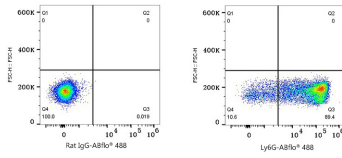
**Storage**

Store at 2-8°C. Avoid freeze.

Buffer: PBS with 0.09% Sodium azide, 0.2% BSA, pH7.3.

## Validation Data

---



Flow cytometry:  $1 \times 10^6$  C57BL/6 bone marrow cells were surface-stained with ABflo® 488 Rat IgG isotype control (5 µl/Test, left) or ABflo® 488 Rat anti-Mouse Ly6G mAb (A27646, 0.25 µg, right).