

# ABflo® 647 Rabbit anti-Pig CD138/Syndecan-1 mAb

Catalog No.: A27636

## Basic Information

### Observed MW

### Calculated MW

32kDa

### Category

Primary antibody

### Applications

FC

### Cross-Reactivity

Pig

### CloneNo number

ARC74089

### Conjugate

ABflo® 647. Ex:648nm. Em:664nm.

## Recommended Dilutions

FC 5 µl per 10<sup>6</sup> cells in  
100 µl volume

## Background

Predicted to enable identical protein binding activity and protein C-terminus binding activity. Involved in myoblast development. Acts upstream of or within canonical Wnt signaling pathway. Located in external side of plasma membrane. Is expressed in several structures, including alimentary system; egg cylinder; sensory organ; skin; and urinary system. Orthologous to human SDC1 (syndecan 1).

## Immunogen Information

### Gene ID

100519770

### Swiss Prot

K7GNF5

### Immunogen

Recombinant protein (or fragment). This information is considered to be commercially sensitive.

### Synonyms

SDC1;syndecan-1

## Contact

☎ | 400-999-6126

✉ | [cn.market@abclonal.com.cn](mailto:cn.market@abclonal.com.cn)

🌐 | [www.abclonal.com.cn](http://www.abclonal.com.cn)

## Product Information

### Source

Rabbit

### Isotype

IgG

### Purification

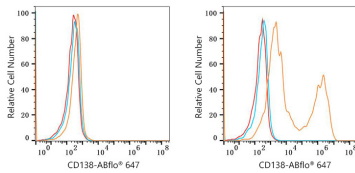
Affinity purification

### Storage

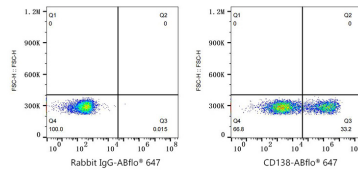
Store at 2-8°C. Avoid freeze.

Buffer: PBS with 0.09% Sodium azide, 0.2% BSA, pH7.3.

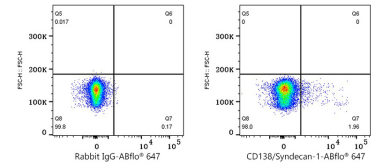
## Validation Data



Flow cytometry:  $1 \times 10^6$  CHO cells (negative control, left) and CHO (Transfection, right) cells were surface-stained with ABflo® 647 Rabbit anti-Pig CD138 mAb (A27636, 5  $\mu$ l/Test, orange line) or ABflo® 647 Rabbit IgG isotype control (A22070, 5  $\mu$ l/Test, blue line). Non-fluorescently stained cells were used as blank control (red line).



Flow cytometry:  $1 \times 10^6$  CHO (Transfection) cells were surface-stained with ABflo® 647 Rabbit IgG isotype control (A22070, 5  $\mu$ l/Test, left) or ABflo® 647 Rabbit anti-Pig CD138 mAb (A27636, 5  $\mu$ l/Test, right).



Flow cytometry:  $1 \times 10^6$  Pig PBMC were surface-stained with ABflo® 647 Rabbit IgG isotype control (A22070, 5  $\mu$ l/Test, left) or ABflo® 647 Rabbit anti-Pig CD138/Syndecan-1 mAb (A27636, 5  $\mu$ l/Test, right). Cells in the lymphocyte gate were used for analysis.