

DNMT3B Rabbit mAb

Catalog No.: A27588 **Recombinant**

Basic Information

Observed MW

80-105kDa

Calculated MW

96kDa

Category

Primary antibody

Applications

WB,ChIP,ELISA

Cross-Reactivity

Human

CloneNo number

ARC74523

Background

CpG methylation is an epigenetic modification that is important for embryonic development, imprinting, and X-chromosome inactivation. Studies in mice have demonstrated that DNA methylation is required for mammalian development. This gene encodes a DNA methyltransferase which is thought to function in de novo methylation, rather than maintenance methylation. The protein localizes primarily to the nucleus and its expression is developmentally regulated. Mutations in this gene cause the immunodeficiency-centromeric instability-facial anomalies (ICF) syndrome. Eight alternatively spliced transcript variants have been described. The full length sequences of variants 4 and 5 have not been determined.

Recommended Dilutions

WB 1:6000 - 1:24000**ChIP** 3µg antibody for
10µg-15µg of Chromatin**ELISA** Recommended starting
concentration is 1 µg/mL.
Please optimize the
concentration based on
your specific assay
requirements.

Immunogen Information

Gene ID

1789

Swiss Prot

Q9UBC3

Immunogen

Recombinant protein (or fragment). This information is considered to be commercially sensitive.

Synonyms

ICF; ICF1; FSHD4; M.HsaIIIB

Contact

 | 400-999-6126 | cn.market@abclonal.com.cn | www.abclonal.com.cn

Product Information

Source

Rabbit

Isotype

IgG

Purification

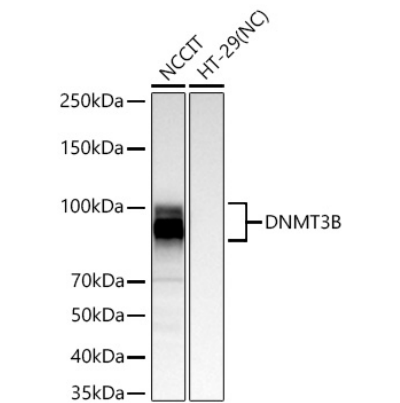
Affinity purification

Storage

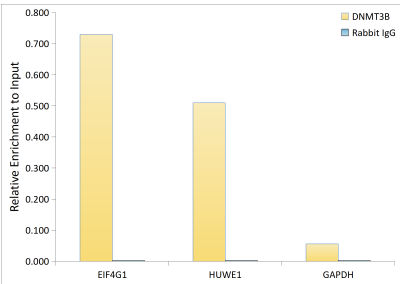
Store at -20°C. Avoid freeze / thaw cycles.

Buffer: PBS with 0.09% Sodium azide, 0.05% BSA, 50% glycerol, pH7.3.

Validation Data



Western blot analysis of various lysates using DNMT3B Rabbit mAb (A27588) at 1:6000 dilution incubated overnight at 4°C.
Secondary antibody: HRP-conjugated Goat anti-Rabbit IgG (H+L) (AS014) at 1:10000 dilution.
Lysates/proteins: 25 µg per lane.
Blocking buffer: 3% nonfat dry milk in TBST.
Detection: ECL Basic Kit (RM00020).
Negative control (NC): HT-29
Exposure time: 20s.



Chromatin immunoprecipitation was performed with 15 µg of cross-linked chromatin from NCCIT cells, using 3 µg of DNMT3B Rabbit mAb (A27588) and Rabbit IgG isotype control (AC042). The enrichment of immunoprecipitated DNA at different genomic loci was examined by quantitative PCR. The histogram compares the ratio of the immunoprecipitated DNA to the input at given loci.