

[KD Validated] FOXK1 Rabbit mAb

Catalog No.: A27583 **Recombinant**

Basic Information

Observed MW

97kDa/

Calculated MW

75kDa

Category

Primary antibody

Applications

WB,IP,IF/ICC,IHC-P,ChIP,ELISA

Cross-Reactivity

Human, Mouse

CloneNo number

ARC73739

Background

Enables 14-3-3 protein binding activity; DNA-binding transcription repressor activity, RNA polymerase II-specific; and transcription cis-regulatory region binding activity. Involved in several processes, including cellular glucose homeostasis; negative regulation of autophagy; and regulation of transcription, DNA-templated. Located in cytoplasm and nucleus.

Recommended Dilutions

WB 1:6000 - 1:24000

IP 0.5µg-4µg antibody for
200µg-400µg extracts of
whole cells

IF/ICC 1:200 - 1:400

IHC-P 1:2000 - 1:8000

ChIP 3µg antibody for
10µg-15µg of Chromatin

ELISA Recommended starting
concentration is 1 µg/mL.
Please optimize the
concentration based on
your specific assay
requirements.

Immunogen Information

Gene ID

221937

Swiss Prot

P85037

Immunogen

Recombinant protein (or fragment).This information is considered to be commercially sensitive.

Synonyms

FOXK1L

Product Information

Source

Rabbit

Isotype

IgG

Purification

Affinity purification

Storage

Store at -20°C. Avoid freeze / thaw cycles.

Buffer: PBS with 0.09% Sodium azide,0.05% BSA,50% glycerol,pH7.3.

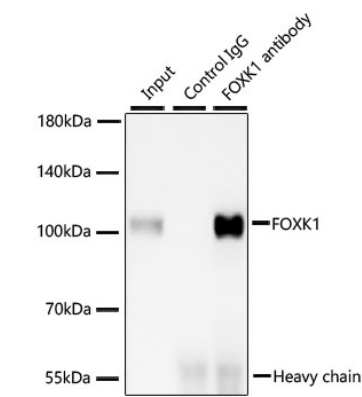
Contact

☎ | 400-999-6126

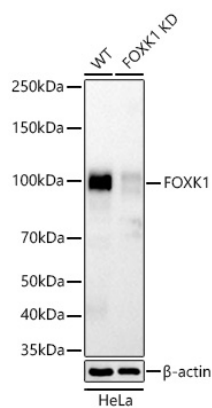
✉ | cn.market@abclonal.com.cn

🌐 | www.abclonal.com.cn

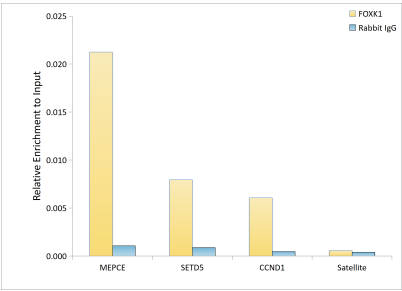
Validation Data



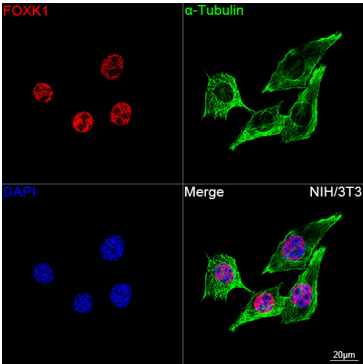
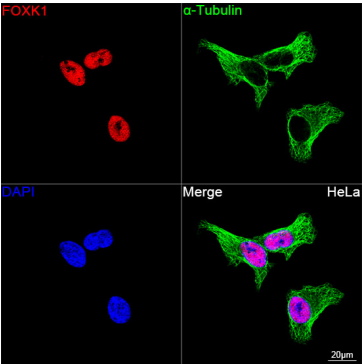
Immunoprecipitation of from 300 µg extracts of Raji cells was performed using 2 µg of [KD Validated] FOXK1 Rabbit mAb (A27583). Rabbit Control IgG (AC005) was used to precipitate the Control IgG sample. IP samples were eluted with 1X Laemmli Buffer. The Input lane represents 10% of the total input. Western blot analysis of immunoprecipitates was conducted using [KD Validated] FOXK1 Rabbit mAb (A27583) at a dilution of 1:3000.



Western blot analysis of lysates from wild type (WT) and FOXK1 knockdown (KD) HeLa cells using [KD Validated] FOXK1 mAb (A27583) at 1:6000 dilution incubated at room temperature for 1.5 hours. Secondary antibody: HRP-conjugated Goat anti-Rabbit IgG (H+L) (AS014) at 1:10000 dilution. Lysates/proteins: 25 µg per lane. Blocking buffer: 3% nonfat dry milk in TBST. Detection: ECL Basic Kit (RM00020). Exposure time: 20s.

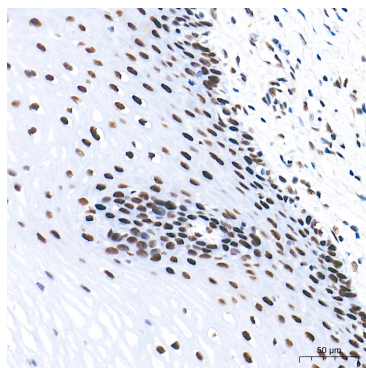


Chromatin immunoprecipitation was performed with 15 µg of cross-linked chromatin from 293F cells, using 3 µg of [KD Validated] FOXK1 mAb (A27583) and Rabbit IgG isotype control (AC042). The enrichment of immunoprecipitated DNA at different genomic loci was examined by quantitative PCR. The histogram compares the ratio of the immunoprecipitated DNA to the input at given loci.

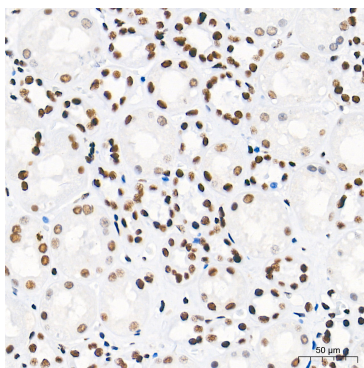


Validation Data

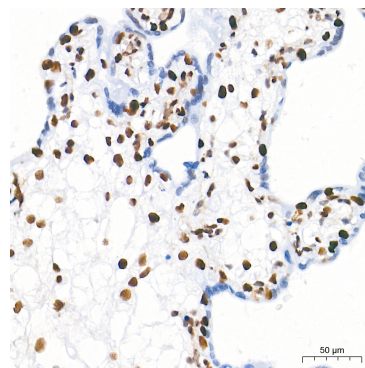
Confocal imaging of HeLa cells using [KD Validated] FOXX1 mAb (A27583, dilution 1:200) followed by a further incubation with Cy3 Goat Anti-Rabbit IgG (H+L) (AS007, dilution 1:500) (Red). The cells were counterstained with α -Tubulin Mouse mAb (AC012, dilution 1:400) followed by incubation with ABflo® 488-conjugated Goat Anti-Mouse IgG (H+L) Ab (AS076, dilution 1:500) (Green). DAPI was used for nuclear staining (Blue). Objective: 100x.



Confocal imaging of NIH/3T3 cells using [KD Validated] FOXX1 mAb (A27583, dilution 1:200) followed by a further incubation with Cy3 Goat Anti-Rabbit IgG (H+L) (AS007, dilution 1:500) (Red). The cells were counterstained with α -Tubulin Mouse mAb (AC012, dilution 1:400) followed by incubation with ABflo® 488-conjugated Goat Anti-Mouse IgG (H+L) Ab (AS076, dilution 1:500) (Green). DAPI was used for nuclear staining (Blue). Objective: 100x.



Immunohistochemistry analysis of paraffin-embedded Human colon tissue using [KD Validated] FOXX1 mAb (A27583) at a dilution of 1:6000 (40x lens). High pressure antigen retrieval performed with 0.01M Tris-EDTA Buffer (pH 9.0) prior to IHC staining.



Immunohistochemistry analysis of paraffin-embedded Human esophagus tissue using [KD Validated] FOXX1 mAb (A27583) at a dilution of 1:6000 (40x lens). High pressure antigen retrieval performed with 0.01M Tris-EDTA Buffer (pH 9.0) prior to IHC staining.

Immunohistochemistry analysis of paraffin-embedded Human kidney tissue using [KD Validated] FOXX1 mAb (A27583) at a dilution of 1:6000 (40x lens). High pressure antigen retrieval performed with 0.01M Tris-EDTA Buffer (pH 9.0) prior to IHC staining.

Immunohistochemistry analysis of paraffin-embedded Human placenta tissue using [KD Validated] FOXX1 mAb (A27583) at a dilution of 1:6000 (40x lens). High pressure antigen retrieval performed with 0.01M Tris-EDTA Buffer (pH 9.0) prior to IHC staining.