

[KD Validated] ROMO1 Rabbit mAb

Catalog No.: A27581 **Recombinant**

Basic Information

Observed MW

10kDa

Calculated MW

8kDa

Category

Primary antibody

Applications

WB,IF/ICC,IHC-P,ELISA

Cross-Reactivity

Human, Mouse, Rat

CloneNo number

ARC71752

Background

The protein encoded by this gene is a mitochondrial membrane protein that is responsible for increasing the level of reactive oxygen species (ROS) in cells. The protein also has antimicrobial activity against a variety of bacteria by inducing bacterial membrane breakage.

Recommended Dilutions

WB 1:14000 - 1:56000

IF/ICC 1:200 - 1:400

IHC-P 1:400 - 1:1600

ELISA Recommended starting concentration is 1 µg/mL. Please optimize the concentration based on your specific assay requirements.

Immunogen Information

Gene ID

140823

Swiss Prot

P60602

Immunogen

Synthetic peptide. This information is considered to be commercially sensitive.

Synonyms

MTGM; MTGMP; C20orf52; bA353C18.2; ROMO1

Contact

☎ | 400-999-6126

✉ | cn.market@abclonal.com.cn

🌐 | www.abclonal.com.cn

Product Information

Source

Rabbit

Isotype

IgG

Purification

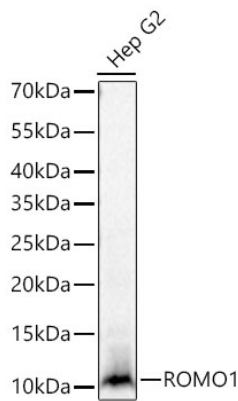
Affinity purification

Storage

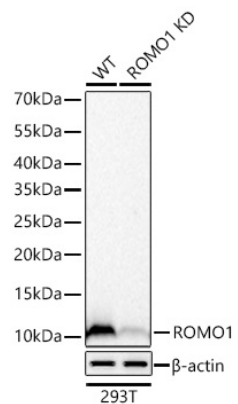
Store at -20°C. Avoid freeze / thaw cycles.

Buffer: PBS with 0.09% Sodium azide,0.05% BSA,50% glycerol,pH7.3.

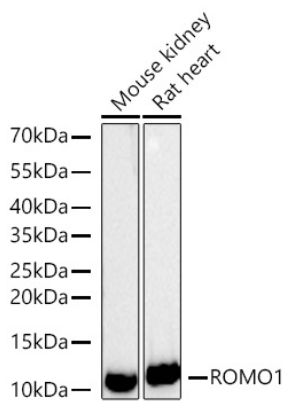
Validation Data



Western blot analysis of lysates from Hep G2 cells using [KD Validated] ROMO1 Rabbit mAb (A27581) at 1:14000 dilution incubated at room temperature for 1.5 hours.
Secondary antibody: HRP-conjugated Goat anti-Rabbit IgG (H+L) (AS014) at 1:10000 dilution.
Lysates/proteins: 25 µg per lane.
Blocking buffer: 3% nonfat dry milk in TBST.
Detection: ECL Basic Kit (RM00020).
Exposure time: 10s.

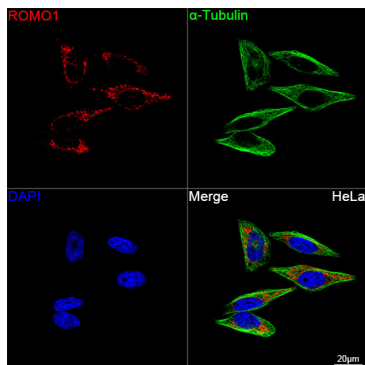


Western blot analysis of lysates from wild type (WT) and ROMO1 knockdown (KD) 293T cells using [KD Validated] ROMO1 Rabbit mAb (A27581) at 1:14000 dilution incubated at room temperature for 1.5 hours.
Secondary antibody: HRP-conjugated Goat anti-Rabbit IgG (H+L) (AS014) at 1:10000 dilution.
Lysates/proteins: 25 µg per lane.
Blocking buffer: 3% nonfat dry milk in TBST.
Detection: ECL Basic Kit (RM00020).
Exposure time: 20s.

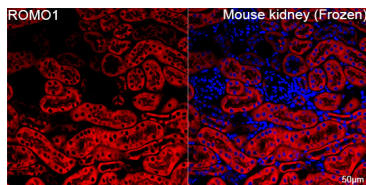


Western blot analysis of various lysates using [KD Validated] ROMO1 Rabbit mAb (A27581) at 1:14000 dilution incubated at room temperature for 1.5 hours.
Secondary antibody: HRP-conjugated Goat anti-Rabbit IgG (H+L) (AS014) at 1:10000 dilution.
Lysates/proteins: 25 µg per lane.
Blocking buffer: 3% nonfat dry milk in TBST.
Detection: ECL Basic Kit (RM00020).
Exposure time: 45s.

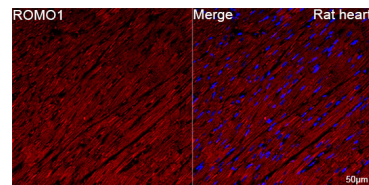
Validation Data



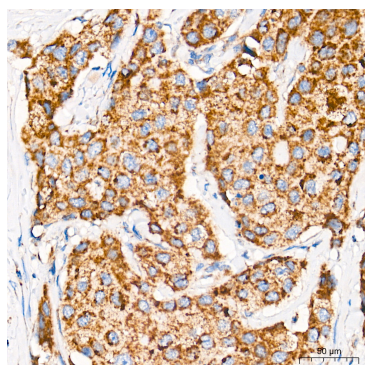
Confocal imaging of HeLa cells using [KD Validated] ROMO1 Rabbit mAb (A27581, dilution 1:200) followed by a further incubation with Cy3 Goat Anti-Rabbit IgG (H+L) (AS007, dilution 1:500) (Red). The cells were counterstained with α -Tubulin Mouse mAb (AC012, dilution 1:400) followed by incubation with ABflo® 488-conjugated Goat Anti-Mouse IgG (H+L) Ab (AS076, dilution 1:500) (Green). DAPI was used for nuclear staining (Blue). Objective: 100x.



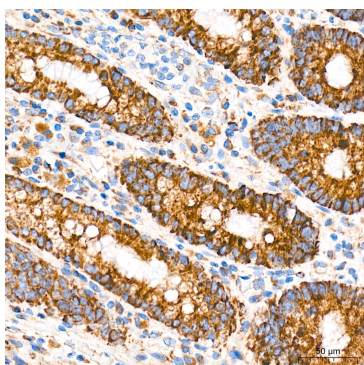
Confocal imaging of frozen sections Mouse kidney tissue using [KD Validated] ROMO1 Rabbit mAb (A27581, dilution 1:200) followed by a further incubation with Cy3 Goat Anti-Rabbit IgG (H+L) (AS007, dilution 1:500) (Red). DAPI was used for nuclear staining (Blue). Microwave antigen retrieval performed with 0.01M Citrate Buffer (pH 6.0) prior to IF staining. Objective: 40x.



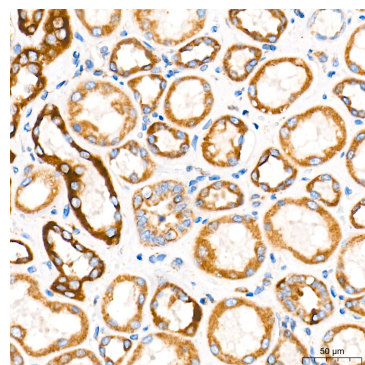
Confocal imaging of paraffin-embedded Rat heart tissue using [KD Validated] ROMO1 Rabbit mAb (A27581, dilution 1:200) followed by a further incubation with Cy3 Goat Anti-Rabbit IgG (H+L) (AS007, dilution 1:500) (Red). DAPI was used for nuclear staining (Blue). High pressure antigen retrieval performed with 0.01M Citrate Buffer (pH 6.0) prior to IF staining. Objective: 40x.



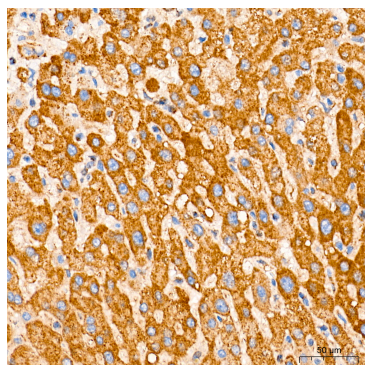
Immunohistochemistry analysis of paraffin-embedded Human breast cancer tissue using [KD Validated] ROMO1 Rabbit mAb (A27581) at a dilution of 1:700 (40x lens). High pressure antigen retrieval performed with 0.01M Tris-EDTA Buffer (pH 9.0) prior to IHC staining.



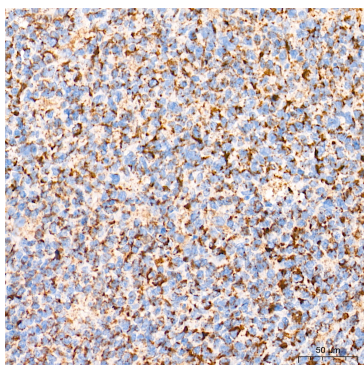
Immunohistochemistry analysis of paraffin-embedded Human colon tissue using [KD Validated] ROMO1 Rabbit mAb (A27581) at a dilution of 1:700 (40x lens). High pressure antigen retrieval performed with 0.01M Tris-EDTA Buffer (pH 9.0) prior to IHC staining.



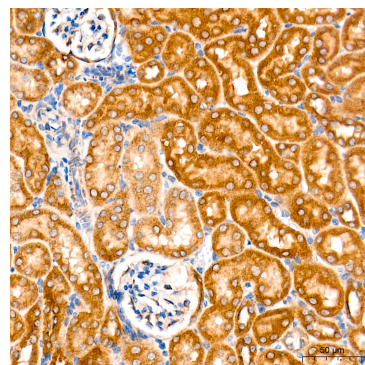
Immunohistochemistry analysis of paraffin-embedded Human kidney tissue using [KD Validated] ROMO1 Rabbit mAb (A27581) at a dilution of 1:700 (40x lens). High pressure antigen retrieval performed with 0.01M Tris-EDTA Buffer (pH 9.0) prior to IHC staining.



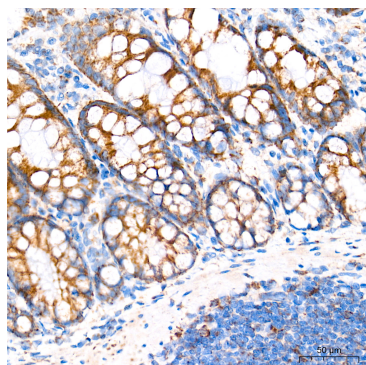
Immunohistochemistry analysis of paraffin-embedded Human liver tissue using [KD Validated] ROMO1 Rabbit mAb (A27581) at a dilution of 1:700 (40x lens). High pressure antigen retrieval performed with 0.01M Tris-EDTA Buffer (pH 9.0) prior to IHC staining.



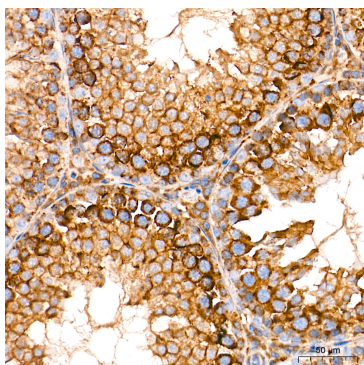
Immunohistochemistry analysis of paraffin-embedded Human tonsil tissue using [KD Validated] ROMO1 Rabbit mAb (A27581) at a dilution of 1:700 (40x lens). High pressure antigen retrieval performed with 0.01M Tris-EDTA Buffer (pH 9.0) prior to IHC staining.



Immunohistochemistry analysis of paraffin-embedded Mouse kidney tissue using [KD Validated] ROMO1 Rabbit mAb (A27581) at a dilution of 1:700 (40x lens). High pressure antigen retrieval performed with 0.01M Tris-EDTA Buffer (pH 9.0) prior to IHC staining.



Immunohistochemistry analysis of paraffin-embedded Rat colon tissue using [KD Validated] ROMO1 Rabbit mAb (A27581) at a dilution of 1:700 (40x lens). High pressure antigen retrieval performed with 0.01M Tris-EDTA Buffer (pH 9.0) prior to IHC staining.



Immunohistochemistry analysis of paraffin-embedded Rat testis tissue using [KD Validated] ROMO1 Rabbit mAb (A27581) at a dilution of 1:700 (40x lens). High pressure antigen retrieval performed with 0.01M Tris-EDTA Buffer (pH 9.0) prior to IHC staining.