

# CCL4/MIP-1 beta Rabbit mAb

Catalog No.: A27580 **Recombinant**

## Basic Information

### Observed MW

15 kDa/12 kDa

### Calculated MW

10 kDa

### Category

Primary antibody

### Applications

WB,IF/ICC,ELISA

### Cross-Reactivity

Human, Mouse, Rat

### CloneNo number

ARC72079

## Background

Predicted to enable chemokine receptor binding activity and identical protein binding activity. Acts upstream of or within cellular response to xenobiotic stimulus. Located in extracellular space. Is expressed in central nervous system; genitourinary system; and retina. Human ortholog(s) of this gene implicated in acquired immunodeficiency syndrome and human immunodeficiency virus infectious disease. Orthologous to several human genes including CCL4L2 (C-C motif chemokine ligand 4 like 2).

## Recommended Dilutions

**WB** 1:5000 - 1:20000

**IF/ICC** 1:200 - 1:400

**ELISA** Recommended starting concentration is 1 µg/mL. Please optimize the concentration based on your specific assay requirements.

## Immunogen Information

### Gene ID

20303

### Swiss Prot

P14097

### Immunogen

Recombinant protein (or fragment). This information is considered to be commercially sensitive.

### Synonyms

Act-2; Mip1b; Scya4; MIP-1B; AT744.1

## Contact

☎ | 400-999-6126

✉ | [cn.market@abclonal.com.cn](mailto:cn.market@abclonal.com.cn)

🌐 | [www.abclonal.com.cn](http://www.abclonal.com.cn)

## Product Information

### Source

Rabbit

### Isotype

IgG

### Purification

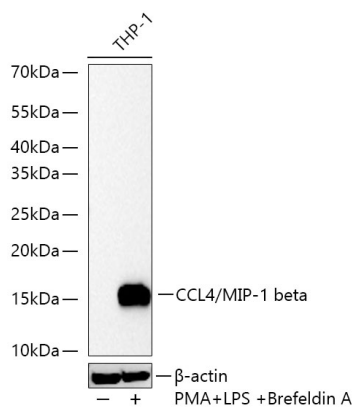
Affinity purification

### Storage

Store at -20°C. Avoid freeze / thaw cycles.

Buffer: PBS with 0.09% Sodium azide, 0.05% BSA, 50% glycerol, pH7.3.

## Validation Data



Western blot analysis of lysates from THP-1 cells using CCL4/MIP-1 beta Rabbit mAb (A27580) at 1:11000 dilution incubated at room temperature for 1.5 hours. THP-1 cells were treated with PMA/TPA (80 nM) at 37°C for overnight, LPS (1 µg/mL) and BFA (300 ng/mL) for 8 hours.

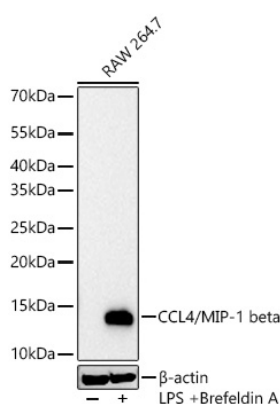
Secondary antibody: HRP-conjugated Goat anti-Rabbit IgG (H+L) (AS014) at 1:10000 dilution.

Lysates/proteins: 30 µg per lane.

Blocking buffer: 3 % nonfat dry milk in TBST.

Detection: ECL Basic Kit (RM00020).

Exposure time: 45s.



Western blot analysis of lysates from RAW 264.7 cells using CCL4/MIP-1 beta Rabbit mAb (A27580) at 1:11000 dilution incubated at room temperature for 1.5 hours. RAW 264.7 cells were treated with LPS (1 µg/mL) and BFA (300 ng/mL) for 8 hours.

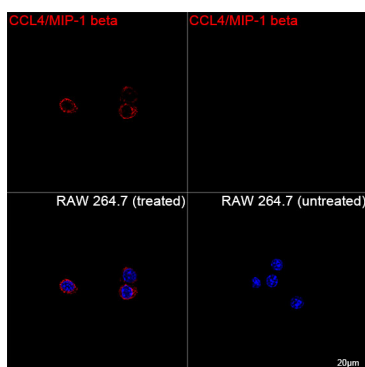
Secondary antibody: HRP-conjugated Goat anti-Rabbit IgG (H+L) (AS014) at 1:10000 dilution.

Lysates/proteins: 30 µg per lane.

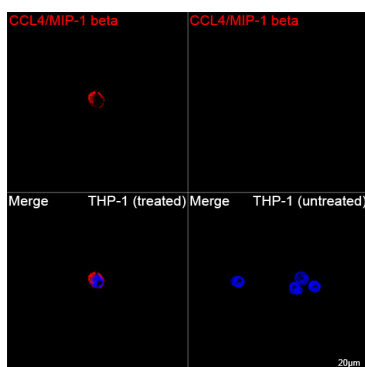
Blocking buffer: 3 % nonfat dry milk in TBST.

Detection: ECL Basic Kit (RM00020).

Exposure time: 45s.



Confocal imaging of RAW 264.7 cells (treated with LPS and BFA) and RAW 264.7 cells (untreated) using CCL4/MIP-1 beta Rabbit mAb (A27580, dilution 1:200) followed by a further incubation with Cy3 Goat Anti-Rabbit IgG (H+L) (AS007, dilution 1:500) (Red). DAPI was used for nuclear staining (Blue). Objective: 100x.



Confocal imaging of THP-1 cells (treated with PMA, LPS and BFA) and THP-1 cells (untreated) using CCL4/MIP-1 beta Rabbit mAb (A27580, dilution 1:200) followed by a further incubation with Cy3 Goat Anti-Rabbit IgG (H+L) (AS007, dilution 1:500) (Red). DAPI was used for nuclear staining (Blue). Objective: 100x.