

# PE/Cyanine7 Rabbit anti-Human CD34 mAb

Catalog No.: A27567

## Basic Information

### Observed MW

### Calculated MW

41kDa

### Category

Primary antibody

### Applications

FC

### Cross-Reactivity

Human

### CloneNo number

ARC67795

### Conjugate

PE-Cy7. Ex:565nm. Em:778nm.

## Background

The protein encoded by this gene may play a role in the attachment of stem cells to the bone marrow extracellular matrix or to stromal cells. This single-pass membrane protein is highly glycosylated and phosphorylated by protein kinase C. Two transcript variants encoding different isoforms have been found for this gene.

## Recommended Dilutions

**FC** 5  $\mu$ l per  $10^6$  cells in  
100  $\mu$ l volume

## Immunogen Information

### Gene ID

947

### Swiss Prot

P28906

### Immunogen

Recombinant protein (or fragment). This information is considered to be commercially sensitive.

### Synonyms

CD34; CD34 molecule; GIG3; MORT1

## Contact

 | 400-999-6126

 | [cn.market@abclonal.com.cn](mailto:cn.market@abclonal.com.cn)

 | [www.abclonal.com.cn](http://www.abclonal.com.cn)

## Product Information

### Source

Rabbit

### Isotype

IgG

### Purification

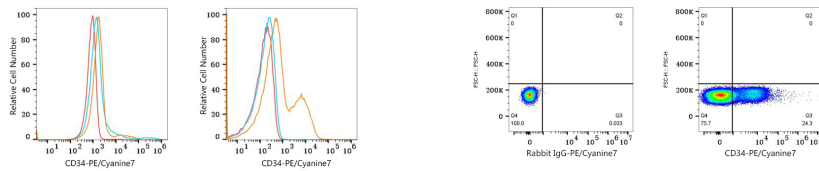
Affinity purification

### Storage

Store at 2-8°C. Avoid freeze.

Buffer: PBS with 0.09% Sodium azide, 0.2% BSA, pH7.3.

## Validation Data



Flow cytometry:  $1 \times 10^6$  HeLa cells (negative control, left) and Human PBMC (right) were surface-stained with PE/Cyanine7 Rabbit anti-Human CD34 mAb (A27567, 5  $\mu$ l/Test, orange line) or PE/Cyanine7 Rabbit IgG isotype control (5  $\mu$ l/Test, blue line). Non-fluorescently stained cells were used as blank control (red line). Cells in the lymphocyte gate were used for analysis.

Flow cytometry:  $1 \times 10^6$  Human PBMC were surface-stained with PE/Cyanine7 Rabbit IgG isotype control (5  $\mu$ l/Test, left) or PE/Cyanine7 Rabbit anti-Human CD34 mAb (A27567, 5  $\mu$ l/Test, right). Cells in the lymphocyte gate were used for analysis.