

ABflo® 450 Rabbit anti-Human CD24 mAb

Catalog No.: A27561

Basic Information

Observed MW

Calculated MW

8kDa

Category

Primary antibody

Applications

FC

Cross-Reactivity

Human

CloneNo number

ARC66763

Conjugate

ABflo® 450. Ex:406nm. Em:445nm.

Background

This gene encodes a sialoglycoprotein that is expressed on mature granulocytes and B cells and modulates growth and differentiation signals to these cells. The precursor protein is cleaved to a short 32 amino acid mature peptide which is anchored via a glycosyl phosphatidylinositol (GPI) link to the cell surface. This gene was missing from previous genome assemblies, but is properly located on chromosome 6. Non-transcribed pseudogenes have been designated on chromosomes 1, 15, 20, and Y. Alternative splicing results in multiple transcript variants.

Recommended Dilutions

FC 5 µl per 10⁶ cells in
100 µl volume

Immunogen Information

Gene ID

100133941

Swiss Prot

P25063

Immunogen

Synthetic peptide. This information is considered to be commercially sensitive.

Synonyms

CD24A

Contact

☎ | 400-999-6126

✉ | cn.market@abclonal.com.cn

🌐 | www.abclonal.com.cn

Product Information

Source

Rabbit

Isotype

IgG

Purification

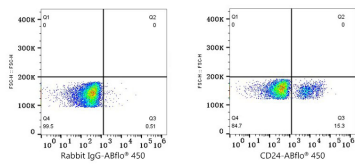
Affinity purification

Storage

Store at 2-8°C. Avoid freeze.

Buffer: PBS with 0.09% Sodium azide, 0.2% BSA, pH7.3.

Validation Data



Flow cytometry: 1X10⁶ Human PBMC were surface-stained with ABflo® 450 Rabbit IgG isotype control (5 µl/Test,left) or ABflo® 450 Rabbit anti-Human CD24 mAb (A27561,5 µl/Test,right). Cells in the lymphocyte gate were used for analysis.