

PE/Cyanine7 Mouse anti-Human CD11c mAb

Catalog No.: A27557

Basic Information

Observed MW

Calculated MW
128kDa

Category
Primary antibody

Applications
FC

Cross-Reactivity
Human

CloneNo number
AMC0552

Conjugate
PE-Cy7. Ex:565nm. Em:778nm.

Recommended Dilutions

FC 5 μ l per 10^6 cells in
100 μ l volume

Contact

 | 400-999-6126
 | cn.market@abclonal.com.cn
 | www.abclonal.com.cn

Background

This gene encodes the integrin alpha X chain protein. Integrins are heterodimeric integral membrane proteins composed of an alpha chain and a beta chain. This protein combines with the beta 2 chain (ITGB2) to form a leukocyte-specific integrin referred to as inactivated-C3b (iC3b) receptor 4 (CR4). The alpha X beta 2 complex seems to overlap the properties of the alpha M beta 2 integrin in the adherence of neutrophils and monocytes to stimulated endothelium cells, and in the phagocytosis of complement coated particles. Two transcript variants encoding different isoforms have been found for this gene.

Immunogen Information

Gene ID 3687 **Swiss Prot** P20702

Immunogen

Recombinant protein (or fragment). This information is considered to be commercially sensitive.

Synonyms

CD11C; SLEB6

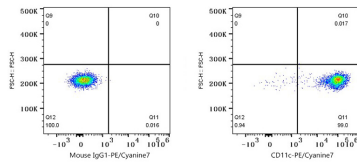
Product Information

Source Mouse **Isotype** IgG **Purification** Affinity purification

Storage

Store at 2-8°C. Avoid freeze.
Buffer: PBS with 0.09% Sodium azide, 0.2% BSA, pH7.3.

Validation Data



Flow cytometry: 1×10^6 Human PBMC were surface-stained with PE/Cyanine7 Mouse IgG1 isotype control (5 μ l/Test, left) or PE/Cyanine7 Mouse anti-Human CD11c mAb (A27557, 5 μ l/Test, right). Cells in the monocyte gate were used for analysis.