

PE Rabbit anti-Human CD353/SLAMF8 mAb

Catalog No.: A27549

Basic Information

Observed MW

Calculated MW

32kDa

Category

Primary antibody

Applications

FC

Cross-Reactivity

Human

CloneNo number

ARC67923

Conjugate

PE. Ex:565nm. Em:574nm.

Background

This gene encodes a member of the CD2 family of cell surface proteins involved in lymphocyte activation. These proteins are characterized by Ig domains. This protein is expressed in lymphoid tissues, and studies of a similar protein in mouse suggest that it may function during B cell lineage commitment. The gene is found in a region of chromosome 1 containing many CD2 genes.

Recommended Dilutions

FC 5 μ l per 10^6 cells in
100 μ l volume

Immunogen Information

Gene ID

56833

Swiss Prot

Q9P0V8

Immunogen

Recombinant protein (or fragment). This information is considered to be commercially sensitive.

Synonyms

BLAME; CD353; SBB142

Contact

☎ | 400-999-6126

✉ | cn.market@abclonal.com.cn

🌐 | www.abclonal.com.cn

Product Information

Source

Rabbit

Isotype

IgG

Purification

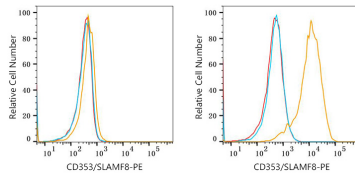
Affinity purification

Storage

Store at 2-8°C. Avoid freeze.

Buffer: PBS with 0.09% Sodium azide, 0.2% BSA, pH7.3.

Validation Data



Flow cytometry: 1X10⁶ THP-1 cells (untreated, left) and THP-1 cells (treated with 100 ng/mL PMA for 48 hours, right) were surface-stained with PE Rabbit anti-Human CD353/SLAMF8 mAb (A27549, 5 µl/Test, orange line) or PE Rabbit IgG isotype control (A24172, 5 µl/Test, blue line). Non-fluorescently stained cells were used as blank control (red line).