

# Biotin Rabbit anti-Human CD34 mAb

Catalog No.: A27536

## Basic Information

### Observed MW

### Calculated MW

35kDa/41kDa

### Category

Primary antibody

### Applications

FC

### Cross-Reactivity

Human

### CloneNo number

ARC67795

### Conjugate

Biotin

## Background

The protein encoded by this gene may play a role in the attachment of stem cells to the bone marrow extracellular matrix or to stromal cells. This single-pass membrane protein is highly glycosylated and phosphorylated by protein kinase C. Two transcript variants encoding different isoforms have been found for this gene.

## Recommended Dilutions

FC 5  $\mu$ l per  $10^6$  cells in  
100  $\mu$ l volume

## Immunogen Information

### Gene ID

947

### Swiss Prot

P28906

### Immunogen

Recombinant protein (or fragment). This information is considered to be commercially sensitive.

### Synonyms

CD34; CD34 molecule; GIG3

## Contact

☎ | 400-999-6126

✉ | [cn.market@abclonal.com.cn](mailto:cn.market@abclonal.com.cn)

🌐 | [www.abclonal.com.cn](http://www.abclonal.com.cn)

## Product Information

### Source

Rabbit

### Isotype

IgG

### Purification

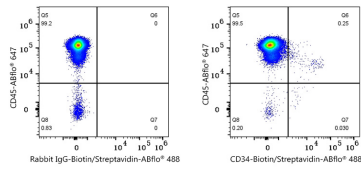
Affinity purification

### Storage

Store at 2-8°C. Avoid freeze.

Buffer: PBS with 0.09% Sodium azide, 0.2% BSA, pH7.3.

## Validation Data



Flow cytometry:  $1 \times 10^6$  Human PBMC were surface-stained with ABflo® 647 Rabbit anti-Human CD45 mAb (A22495, 5  $\mu$ l/Test) and Biotin Rabbit IgG isotype control (A25626, 5  $\mu$ l/Test, left) or Biotin Rabbit anti-Human CD34 mAb (A27536, 5  $\mu$ l/Test, right), followed by ABflo® 488 Streptavidin staining. Cells in the lymphocyte gate were used for analysis.