

# PE Rabbit anti-Human/Monkey CD4 mAb

Catalog No.: A27504

## Basic Information

### Observed MW

Refer to figures

### Calculated MW

51kDa

### Category

Primary antibody

### Applications

FC

### Cross-Reactivity

Human, Cynomolgus

### CloneNo number

ARC5142-01

### Conjugate

PE. Ex:565nm. Em:574nm.

## Recommended Dilutions

**FC** 5  $\mu$ l per  $10^6$  cells in  
100  $\mu$ l volume

## Background

This gene encodes the CD4 membrane glycoprotein of T lymphocytes. The CD4 antigen acts as a coreceptor with the T-cell receptor on the T lymphocyte to recognize antigens displayed by an antigen presenting cell in the context of class II MHC molecules. The CD4 antigen is also a primary receptor for entry of the human immunodeficiency virus through interactions with the HIV Env gp120 subunit. This gene is expressed not only in T lymphocytes, but also in B cells, macrophages, granulocytes, as well as in various regions of the brain. The protein functions to initiate or augment the early phase of T-cell activation, and may function as an important mediator of indirect neuronal damage in infectious and immune-mediated diseases of the central nervous system. Multiple alternatively spliced transcript variants encoding different isoforms have been identified in this gene.

## Immunogen Information

### Gene ID

Hu 920 Cyon 101864991

### Swiss Prot

P01730

### Immunogen

Recombinant protein (or fragment). This information is considered to be commercially sensitive.

### Synonyms

T4; IMD79; Leu-3; OKT4D; CD4mut

## Contact

 | 400-999-6126

 | [cn.market@abclonal.com.cn](mailto:cn.market@abclonal.com.cn)

 | [www.abclonal.com.cn](http://www.abclonal.com.cn)

## Product Information

### Source

Rabbit

### Isotype

IgG

### Purification

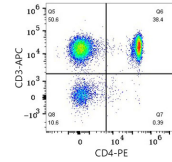
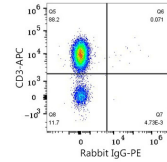
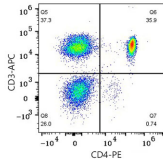
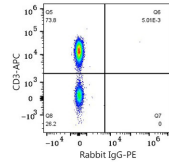
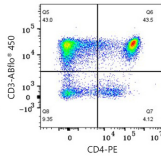
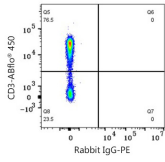
Affinity purification

### Storage

Store at 2-8°C. Avoid freeze.

Buffer: PBS with 0.09% Sodium azide, 0.2% BSA, pH7.3.

## Validation Data



Flow cytometry:  $1 \times 10^6$  Cynomolgus peripheral blood mononuclear cells were surface-stained with ABflo® 450 Rabbit anti-Human/Monkey CD3 mAb (A27177, 5  $\mu$ l/Test) and PE Rabbit IgG isotype control (A24172, 5  $\mu$ l/Test, left) or PE Rabbit anti-Human/Monkey CD4 mAb (A27504, 5  $\mu$ l/Test, right). Cells in the lymphocyte gate were used for analysis.

Flow cytometry:  $1 \times 10^6$  Human PBMC were surface-stained with APC Rabbit anti-Human/Monkey CD3 mAb (A27111, 5  $\mu$ l/Test) and PE Rabbit IgG isotype control (A24172, 5  $\mu$ l/Test, left) or PE Rabbit anti-Human/Monkey CD4 mAb (A27504, 5  $\mu$ l/Test, right). Cells in the lymphocyte gate were used for analysis.

Flow cytometry:  $1 \times 10^6$  Cynomolgus PBMC were surface-stained with APC Rabbit anti-Human/Monkey CD3 mAb (A27111, 5  $\mu$ l/Test) and PE Rabbit IgG isotype control (A24172, 5  $\mu$ l/Test, left) or PE Rabbit anti-Human/Monkey CD4 mAb (A27504, 5  $\mu$ l/Test, right). Cells in the lymphocyte gate were used for analysis.