

ABflo® 450 Mouse anti-Human CD11b mAb

Catalog No.: A27475

Basic Information

Observed MW

Calculated MW
127kDa

Category
Primary antibody

Applications
FC

Cross-Reactivity
Human

CloneNo number
AMC10008

Conjugate
ABflo® 450. Ex:406nm. Em:445nm.

Background

This gene encodes the integrin alpha M chain. Integrins are heterodimeric integral membrane proteins composed of an alpha chain and a beta chain. This I-domain containing alpha integrin combines with the beta 2 chain (ITGB2) to form a leukocyte-specific integrin referred to as macrophage receptor 1 ('Mac-1'), or inactivated-C3b (iC3b) receptor 3 ('CR3'). The alpha M beta 2 integrin is important in the adherence of neutrophils and monocytes to stimulated endothelium, and also in the phagocytosis of complement coated particles. Multiple transcript variants encoding different isoforms have been found for this gene.

Recommended Dilutions

FC 5 µl per 10⁶ cells in
100 µl volume

Immunogen Information

Gene ID 3684	Swiss Prot P11215
------------------------	-----------------------------

Immunogen
Synthetic peptide. This information is considered to be commercially sensitive.

Synonyms
CR3A; MO1A; CD11B; MAC-1; MAC1A; SLEB6

Contact

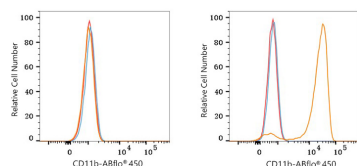
☎		400-999-6126
✉		cn.market@abclonal.com.cn
🌐		www.abclonal.com.cn

Product Information

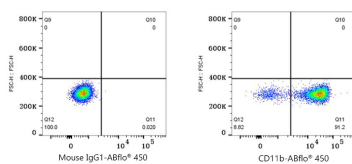
Source Mouse	Isotype IgG1, κ	Purification Affinity purification
------------------------	---------------------------	--

Storage
Store at 2-8°C. Avoid freeze.
Buffer: PBS with 0.09% Sodium azide, 0.2% BSA, pH7.3.

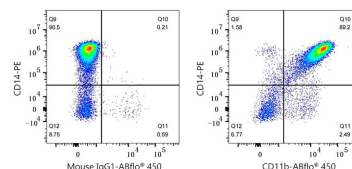
Validation Data



Flow cytometry: 1×10^6 Jurkat cells (negative control, left) and Human PBMC (right) were surface-stained with ABflo® 450 Mouse anti-Human CD11b mAb (A27475, 5 μ l/Test, orange line) or ABflo® 450 Mouse IgG1 isotype control (5 μ l/Test, blue line). Non-fluorescently stained cells were used as blank control (red line).



Flow cytometry: 1×10^6 Human PBMC were surface-stained with ABflo® 450 Mouse IgG1 isotype control (5 μ l/Test, left) or ABflo® 450 Mouse anti-Human CD11b mAb (A27475, 5 μ l/Test, right).



Flow cytometry: 1×10^6 Human PBMC were surface-stained with PE Rabbit anti-Human CD14 mAb (A25938, 5 μ l/Test) and ABflo® 450 Mouse IgG1 isotype control (5 μ l/Test, left) or ABflo® 450 Mouse anti-Human CD11b mAb (A27475, 5 μ l/Test, right). Cells in the Monocyte gate were used for analysis.