

ABflo® 500 Mouse anti-Human CD11b mAb

Catalog No.: A27474

Basic Information

Observed MW

Calculated MW

127kDa

Category

Primary antibody

Applications

FC

Cross-Reactivity

Human

CloneNo number

AMC10008

Conjugate

ABflo® 500. Ex:410nm. Em:501nm.

Background

This gene encodes the integrin alpha M chain. Integrins are heterodimeric integral membrane proteins composed of an alpha chain and a beta chain. This I-domain containing alpha integrin combines with the beta 2 chain (ITGB2) to form a leukocyte-specific integrin referred to as macrophage receptor 1 ('Mac-1'), or inactivated-C3b (iC3b) receptor 3 ('CR3'). The alpha M beta 2 integrin is important in the adherence of neutrophils and monocytes to stimulated endothelium, and also in the phagocytosis of complement coated particles. Multiple transcript variants encoding different isoforms have been found for this gene.

Recommended Dilutions

FC 5 µl per 10⁶ cells in
100 µl volume

Immunogen Information

Gene ID

3684

Swiss Prot

P11215

Immunogen

Synthetic peptide. This information is considered to be commercially sensitive.

Synonyms

CR3A; MO1A; CD11B; MAC-1; MAC1A; SLEB6

Contact

☎ | 400-999-6126

✉ | cn.market@abclonal.com.cn

🌐 | www.abclonal.com.cn

Product Information

Source

Mouse

Isotype

IgG1, κ

Purification

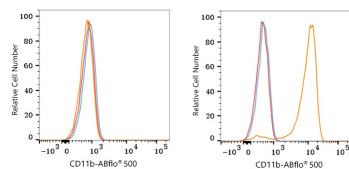
Affinity purification

Storage

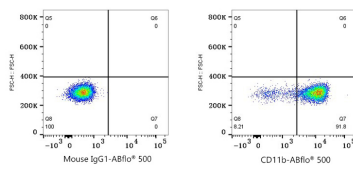
Store at 2-8°C. Avoid freeze.

Buffer: PBS with 0.09% Sodium azide, 0.2% BSA, pH7.3.

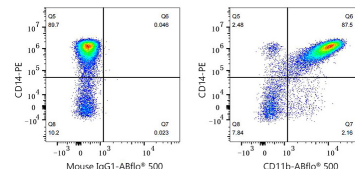
Validation Data



Flow cytometry: 1×10^6 Jurkat cells (negative control, left) and Human PBMC (right) were surface-stained with ABflo® 500 Mouse anti-Human CD11b mAb (A27474, 5 μ l/Test, orange line) or ABflo® 500 Mouse IgG1 isotype control (5 μ l/Test, blue line). Non-fluorescently stained cells were used as blank control (red line).



Flow cytometry: 1×10^6 Human PBMC were surface-stained with ABflo® 500 Mouse IgG1 isotype control (5 μ l/Test, left) or ABflo® 500 Mouse anti-Human CD11b mAb (A27474, 5 μ l/Test, right).



Flow cytometry: 1×10^6 Human PBMC were surface-stained with PE Rabbit anti-Human CD14 mAb (A25938, 5 μ l/Test) and ABflo® 500 Mouse IgG1 isotype control (5 μ l/Test, left) or ABflo® 500 Mouse anti-Human CD11b mAb (A27474, 5 μ l/Test, right). Cells in the Monocyte gate were used for analysis.