

# Alpha-synuclein Truncation 1-122 mAb [MJFF-D-10B7]

Catalog No.: A27452

## Basic Information

### Observed MW

Refer to figures

### Calculated MW

14kDa

### Category

Primary antibody

### Applications

Slot blot, ELISA

### Cross-Reactivity

Human

### CloneNo number

ARC5167

## Background

Alpha-synuclein is a member of the synuclein family, which also includes beta- and gamma-synuclein. Alpha-synuclein is a neuronal protein that plays many roles in synaptic activity such as membrane trafficking of synaptic vesicles and neurotransmitter release. Mutations in SNCA have been implicated in genetic forms of Parkinson disease and pathological post-translational modifications of alpha-synuclein are a hallmark of Parkinson's disease. These modifications include phosphorylation, nitration, acetylation, truncation, and aggregation. C-terminal truncations of alpha-synuclein lead to increased aggregation. Evidence for the 1-122 truncation in brains of patients with Parkinson's disease and Lewy Body Dementia (LBD).

## Recommended Dilutions

**Slot blot** 1:500 - 1:1000

**ELISA** Recommended starting concentration is 1 µg/mL. Please optimize the concentration based on your specific assay requirements.

## Immunogen Information

### Gene ID

6622

### Swiss Prot

P37840

### Immunogen

Recombinant protein (or fragment). This information is considered to be commercially sensitive.

### Synonyms

PD1; NACP; PARK1; PARK4

## Contact

☎ | 400-999-6126

✉ | [cn.market@abclonal.com.cn](mailto:cn.market@abclonal.com.cn)

🌐 | [www.abclonal.com.cn](http://www.abclonal.com.cn)

## Product Information

### Source

Rabbit

### Isotype

IgG

### Purification

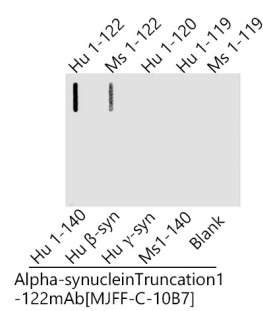
Affinity purification

### Storage

Store at -20°C. Avoid freeze / thaw cycles.

Buffer: PBS with 0.09% Sodium azide, 0.05% BSA, 50% glycerol, pH7.3.

# Validation Data



Slot blot analysis of various lysates using Alpha-synuclein Truncation 1-122 mAb [MJFF-C-10B7] (A27452) at 1:2000 dilution incubated overnight at 4°C. Secondary antibody: HRP-conjugated Goat anti-Rabbit IgG (H+L) at 1:10000 dilution. Lysates/proteins: 200 ng per lane. Blocking buffer: Intercept Blocking Buffer.