

APC/Cyanine7 Rabbit anti-Human/Monkey CD127/IL-7R α mAb

Catalog No.: A27437

Basic Information

Observed MW

Calculated MW
52kDa

Category
Primary antibody

Applications
FC

Cross-Reactivity
Human, Cynomolgus

CloneNo number
ARC66004

Conjugate
APC-Cy7. Ex:651nm. Em:779nm.

Recommended Dilutions

FC 5 μ l per 10^6 cells in
100 μ l volume

Background

The protein encoded by this gene is a receptor for interleukin 7 (IL7). The function of this receptor requires the interleukin 2 receptor, gamma chain (IL2RG), which is a common gamma chain shared by the receptors of various cytokines, including interleukins 2, 4, 7, 9, and 15. This protein has been shown to play a critical role in V(D)J recombination during lymphocyte development. Defects in this gene may be associated with severe combined immunodeficiency (SCID). Alternatively spliced transcript variants have been found.

Immunogen Information

Gene ID	Swiss Prot
Hu 3575 Cylon 102143679	P16871

Immunogen

Recombinant protein (or fragment). This information is considered to be commercially sensitive.

Synonyms

ILRA; CD127; IL7RA; CDW127; IMD104; sIL-7R; Inc-IL7R; IL7Ralpha; IL-7Ralpha; IL-7R-alpha

Contact

 | 400-999-6126

 | cn.market@abclonal.com.cn

 | www.abclonal.com.cn

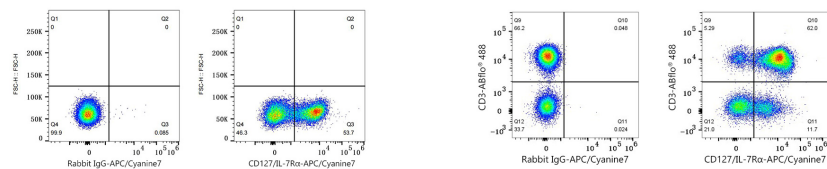
Product Information

Source	Isotype	Purification
Rabbit	IgG	Affinity purification

Storage

Store at 2-8°C. Avoid freeze.
Buffer: PBS with 0.09% Sodium azide, 0.2% BSA, pH7.3.

Validation Data



Flow cytometry: 1×10^6 Cynomolgus PBMC were surface-stained with APC/Cyanine7 Rabbit IgG isotype control (5 μ l/Test,left) or APC/Cyanine7 Rabbit anti-Human/Monkey CD127/IL-7R α mAb (A27437,5 μ l/Test,right). Cells in the Lymphocyte gate were used for analysis.

Flow cytometry: 1×10^6 Human PBMC were surface-stained with ABflo® 488 Rabbit anti-Human/Monkey CD3 mAb (A26283,5 μ l/Test) and APC/Cyanine7 Rabbit IgG isotype control (5 μ l/Test,left) or APC/Cyanine7 Rabbit anti-Human/Monkey CD127/IL-7R α mAb (A27437,5 μ l/Test,right). Cells in the lymphocyte gate were used for analysis.