

# GRB14 Rabbit pAb

Catalog No.: A2742SP

## Basic Information

### Observed MW

61 kDa

### Calculated MW

61 kDa

### Category

Primary antibody

### Applications

WB,IHC-P,ELISA

### Cross-Reactivity

Mouse, Rat

## Background

Enables protein-macromolecule adaptor activity. Predicted to be involved in insulin receptor signaling pathway; negative regulation of insulin receptor signaling pathway; and negative regulation of meiotic cell cycle process involved in oocyte maturation. Predicted to act upstream of or within signal transduction. Predicted to be located in endosome. Predicted to be active in cytoplasm and plasma membrane. Is expressed in several structures, including alimentary system; central nervous system; integument; musculoskeletal system; and respiratory system. Human ortholog(s) of this gene implicated in type 2 diabetes mellitus. Orthologous to human GRB14 (growth factor receptor bound protein 14).

## Recommended Dilutions

**WB** 1:1000 - 1:8000

**IHC-P** 1:300 - 1:1200

**ELISA** Recommended starting concentration is 1 µg/mL. Please optimize the concentration based on your specific assay requirements. For high-ratio antibody dilutions (≥1:10000) a sequential dilution method is strongly recommended to ensure measurement accuracy.

## Immunogen Information

### Gene ID

50915

### Swiss Prot

Q9JLM9

### Immunogen

Recombinant protein (or fragment). This information is considered to be commercially sensitive.

### Synonyms

GRB14

## Product Information

### Source

Rabbit

### Isotype

IgG

### Purification

Affinity purification

### Storage

Store at -20°C. Avoid freeze / thaw cycles.

Buffer: PBS, pH 7.3, containing 50% glycerol. Preserved with Proclin300 or sodium azide.

May contain 0.05% BSA as specified on the Certificate of Analysis.

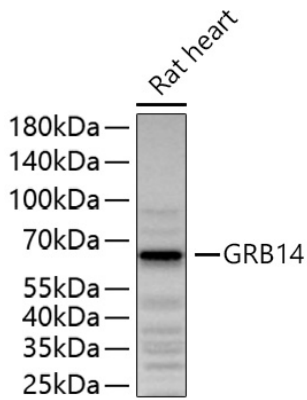
## Contact

☎ | 400-999-6126

✉ | [cn.market@abclonal.com.cn](mailto:cn.market@abclonal.com.cn)

🌐 | [www.abclonal.com.cn](http://www.abclonal.com.cn)

## Validation Data



Western blot analysis of lysates from Rat heart using GRB14 Rabbit pAb (A2742SP) at 1:2000 dilution incubated overnight at 4°C.

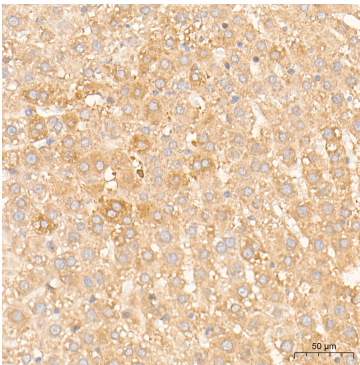
Secondary antibody: HRP-conjugated Goat anti-Rabbit IgG (H+L) (AS014) at 1:10000 dilution.

Lysates/proteins: 25 µg per lane.

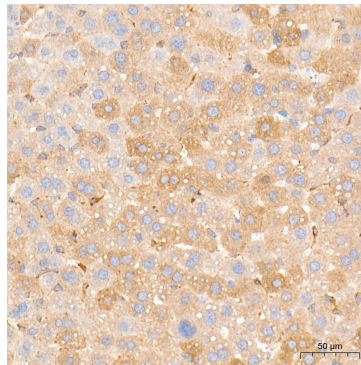
Blocking buffer: 3% nonfat dry milk in TBST.

Detection: ECL Basic Kit (RM00020).

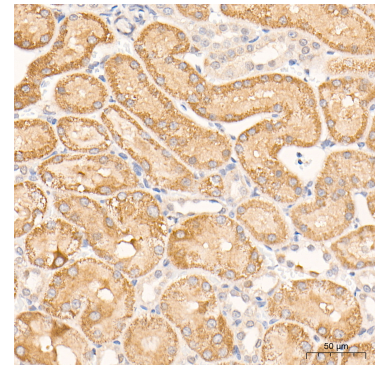
Exposure time: 5 s.



Immunohistochemistry analysis of paraffin-embedded Rat liver tissue using GRB14 Rabbit pAb (A2742SP) at a dilution of 1:1000 (40x lens). High pressure antigen retrieval performed with 0.01M Tris-EDTA Buffer (pH 9.0) prior to IHC staining.



Immunohistochemistry analysis of paraffin-embedded Mouse liver tissue using GRB14 Rabbit pAb (A2742SP) at a dilution of 1:1000 (40x lens). High pressure antigen retrieval performed with 0.01M Tris-EDTA Buffer (pH 9.0) prior to IHC staining.



Immunohistochemistry analysis of paraffin-embedded Rat kidney tissue using GRB14 Rabbit pAb (A2742SP) at a dilution of 1:1000 (40x lens). High pressure antigen retrieval performed with 0.01M Tris-EDTA Buffer (pH 9.0) prior to IHC staining.