

Integrin beta 1 Rabbit pAb

Catalog No.: A27421

Basic Information

Observed MW

115kDa/135kDa

Calculated MW

88kDa

Category

Primary antibody

Applications

WB, IHC-P, IF/ICC, ELISA

Cross-Reactivity

Human, Mouse

Background

Enables integrin binding activity involved in cell-matrix adhesion and signaling receptor activity. Contributes to laminin binding activity. Involved in several processes, including basement membrane organization; cellular response to low-density lipoprotein particle stimulus; and regulation of synapse pruning. Acts upstream of or within with a negative effect on reactive gliosis and regulation of spontaneous synaptic transmission. Acts upstream of or within several processes, including circulatory system development; neuron projection morphogenesis; and regulation of transmembrane transport. Located in several cellular components, including intercalated disc; myelin sheath abaxonal region; and sarcolemma. Part of integrin alpha7-beta1 complex and integrin alpha9-beta1 complex. Is active in Schaffer collateral - CA1 synapse; cerebellar climbing fiber to Purkinje cell synapse; and synaptic membrane. Colocalizes with cytoplasmic vesicle; perinuclear region of cytoplasm; and plasma membrane. Is expressed in several structures, including alimentary system; brain; eye; genitourinary system; and heart. Used to study Hirschsprung's disease. Orthologous to human ITGB1 (integrin subunit beta 1).

Recommended Dilutions

WB 1:500 - 1:1000**IHC-P** 1:50 - 1:200**IF/ICC** 1:50 - 1:200

ELISA Recommended starting concentration is 1 µg/mL. Please optimize the concentration based on your specific assay requirements.

Immunogen Information

Gene ID

16412

Swiss Prot

P09055

Immunogen

Recombinant protein (or fragment). This information is considered to be commercially sensitive.

Synonyms

CD29; Fnrb; gpIIa; Gm9863; 4633401G24Rik

Contact

 | 400-999-6126 | cn.market@abclonal.com.cn | www.abclonal.com.cn

Product Information

Source

Rabbit

Isotype

IgG

Purification

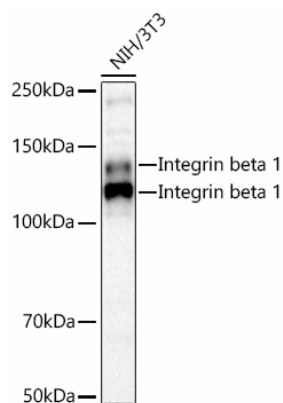
Affinity purification

Storage

Store at -20°C. Avoid freeze / thaw cycles.

Buffer: PBS with 0.09% Sodium azide, 50% glycerol, pH7.3.

Validation Data



Western blot analysis of lysates from NIH/3T3 cells using Integrin beta 1 Rabbit pAb (A27421) at 1:3000 dilution incubated overnight at 4°C.

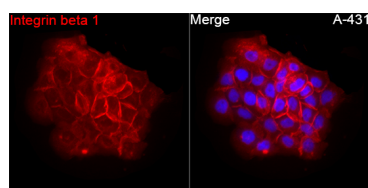
Secondary antibody: HRP-conjugated Goat anti-Rabbit IgG (H+L) (AS014) at 1:10000 dilution.

Lysates/proteins: 25 µg per lane.

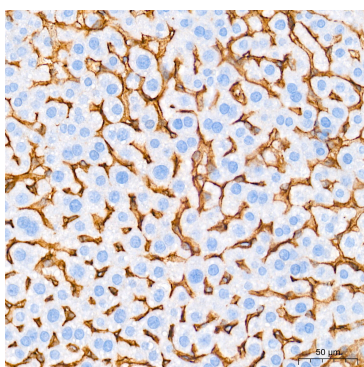
Blocking buffer: 3% nonfat dry milk in TBST.

Detection: ECL Basic Kit (RM00020).

Exposure time: 10s.



Immunofluorescence analysis of A-431 cells using Integrin beta 1 Rabbit pAb (A27421) at a dilution of 1:100 (40x lens). Secondary antibody: Cy3-conjugated Goat anti-Rabbit IgG (H+L)(AS007) at 1:500 dilution. Blue: DAPI for nuclear staining.



Immunohistochemistry analysis of paraffin-embedded Mouse liver tissue using Integrin beta 1 Rabbit pAb (A27421) at a dilution of 1:2000 (40x lens). High pressure antigen retrieval performed with 0.01M Tris-EDTA Buffer (pH 9.0) prior to IHC staining.