

PE/Cyanine7 Mouse anti-Human CD45RO mAb

Catalog No.: A27416

Basic Information

Observed MW**Calculated MW**

136kDa

Category

Primary antibody

Applications

FC

Cross-Reactivity

Human

CloneNo number

AMC10000

Conjugate

PE-Cy7. Ex:565nm. Em:778nm.

Background

The protein encoded by this gene is a member of the protein tyrosine phosphatase (PTP) family. PTPs are known to be signaling molecules that regulate a variety of cellular processes including cell growth, differentiation, mitosis, and oncogenic transformation. This PTP contains an extracellular domain, a single transmembrane segment and two tandem intracytoplasmic catalytic domains, and thus is classified as a receptor type PTP. This PTP has been shown to be an essential regulator of T- and B-cell antigen receptor signaling. It functions through either direct interaction with components of the antigen receptor complexes, or by activating various Src family kinases required for the antigen receptor signaling. This PTP also suppresses JAK kinases, and thus functions as a regulator of cytokine receptor signaling. Alternatively spliced transcripts variants of this gene, which encode distinct isoforms, have been reported.

Recommended Dilutions

FC 5 µl per 10⁶ cells in
100 µl volume

Immunogen Information

Gene ID

5788

Swiss Prot

P08575

Immunogen

Synthetic peptide. This information is considered to be commercially sensitive.

Synonyms

LCA; LY5; B220; CD45; L-CA; T200; CD45R; GP180; IMD105

Contact

 | 400-999-6126 | cn.market@abclonal.com.cn | www.abclonal.com.cn

Product Information

Source

Mouse

Isotype

IgG2a, κ

Purification

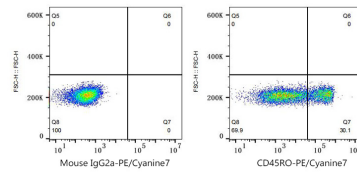
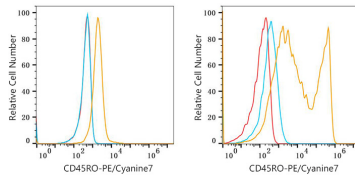
Affinity purification

Storage

Store at 2-8°C. Avoid freeze.

Buffer: PBS with 0.09% Sodium azide, 0.2% BSA, pH7.3.

Validation Data



Flow cytometry: 1×10^6 293T cells (negative control, left) and Human PBMC (right) were surface-stained with PE/Cyanine7 Mouse anti-Human CD45RO mAb (A27416, 5 μ l/Test, orange line) or PE/Cyanine7 Mouse IgG2a isotype control (5 μ l/Test, blue line). Non-fluorescently stained cells were used as blank control (red line).

Flow cytometry: 1×10^6 Human PBMC were surface-stained with PE/Cyanine7 Mouse IgG2a isotype control (5 μ l/Test, left) or PE/Cyanine7 Mouse anti-Human CD45RO mAb (A27416, 5 μ l/Test, right).