

# PE Mouse anti-Human CD45RO mAb

**Catalog No.: A27415**

## Basic Information

**Observed MW****Calculated MW**

136kDa

**Category**

Primary antibody

**Applications**

FC

**Cross-Reactivity**

Human

**CloneNo number**

AMC10000

**Conjugate**

PE. Ex:565nm. Em:574nm.

## Background

The protein encoded by this gene is a member of the protein tyrosine phosphatase (PTP) family. PTPs are known to be signaling molecules that regulate a variety of cellular processes including cell growth, differentiation, mitosis, and oncogenic transformation. This PTP contains an extracellular domain, a single transmembrane segment and two tandem intracytoplasmic catalytic domains, and thus is classified as a receptor type PTP. This PTP has been shown to be an essential regulator of T- and B-cell antigen receptor signaling. It functions through either direct interaction with components of the antigen receptor complexes, or by activating various Src family kinases required for the antigen receptor signaling. This PTP also suppresses JAK kinases, and thus functions as a regulator of cytokine receptor signaling. Alternatively spliced transcripts variants of this gene, which encode distinct isoforms, have been reported.

## Recommended Dilutions

**FC** 5 µl per 10<sup>6</sup> cells in  
100 µl volume

## Immunogen Information

**Gene ID**

5788

**Swiss Prot**

P08575

**Immunogen**

Synthetic peptide. This information is considered to be commercially sensitive.

**Synonyms**

LCA; LY5; B220; CD45; L-CA; T200; CD45R; GP180; IMD105

## Contact

 | 400-999-6126 | [cn.market@abclonal.com.cn](mailto:cn.market@abclonal.com.cn) | [www.abclonal.com.cn](http://www.abclonal.com.cn)

## Product Information

**Source**

Mouse

**Isotype**

IgG2a, κ

**Purification**

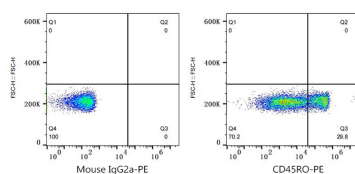
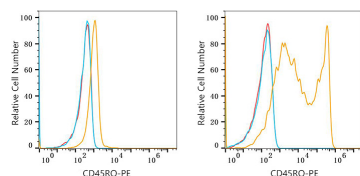
Affinity purification

**Storage**

Store at 2-8°C. Avoid freeze.

Buffer: PBS with 0.09% Sodium azide, 0.2% BSA, pH7.3.

## Validation Data



Flow cytometry:  $1 \times 10^6$  293T cells (negative control, left) and Human PBMC (right) were surface-stained with PE Mouse anti-Human CD45RO mAb (A27415,5  $\mu$ l/Test, orange line) or PE Mouse IgG2a isotype control (5  $\mu$ l/Test, blue line). Non-fluorescently stained cells were used as blank control (red line).

Flow cytometry:  $1 \times 10^6$  Human PBMC were surface-stained with PE Mouse IgG2a isotype control (5  $\mu$ l/Test, left) or PE Mouse anti-Human CD45RO mAb (A27415,5  $\mu$ l/Test, right).