

PE Rabbit anti-Human TMPRSS2 mAb

Catalog No.: A27410

Basic Information

Observed MW**Calculated MW**

54kDa

Category

Primary antibody

Applications

FC

Cross-Reactivity

Human

CloneNo number

ARC72157

Conjugate

PE. Ex:565nm. Em:574nm.

Background

This gene encodes a protein that belongs to the serine protease family. The encoded protein contains a type II transmembrane domain, a receptor class A domain, a scavenger receptor cysteine-rich domain and a protease domain. Serine proteases are known to be involved in many physiological and pathological processes. This gene was demonstrated to be up-regulated by androgenic hormones in prostate cancer cells and down-regulated in androgen-independent prostate cancer tissue. The protease domain of this protein is thought to be cleaved and secreted into cell media after autocleavage. This protein also facilitates entry of viruses into host cells by proteolytically cleaving and activating viral envelope glycoproteins. Viruses found to use this protein for cell entry include Influenza virus and the human coronaviruses HCoV-229E, MERS-CoV, SARS-CoV and SARS-CoV-2 (COVID-19 virus). Alternatively spliced transcript variants encoding different isoforms have been found for this gene.

Recommended Dilutions

FC 5 µl per 10⁶ cells in
100 µl volume

Immunogen Information

Gene ID

7113

Swiss Prot

O15393

Immunogen

Recombinant protein (or fragment). This information is considered to be commercially sensitive.

Synonyms

PRSS10

Contact

 | 400-999-6126 | cn.market@abclonal.com.cn | www.abclonal.com.cn

Product Information

Source

Rabbit

Isotype

IgG

Purification

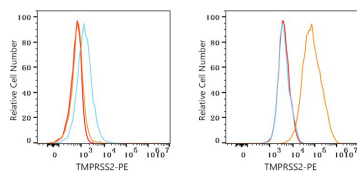
Affinity purification

Storage

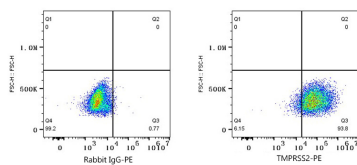
Store at 2-8°C. Avoid freeze.

Buffer: PBS with 0.09% Sodium azide, 0.2% BSA, pH7.3.

Validation Data



Flow cytometry: 1X10⁶ 293T cells (negative control, left) and LNCaP cells (right) were surface-stained with PE Rabbit anti-Human TMPRSS2 mAb (A27410,5 μ l/Test, orange line) or PE Rabbit IgG isotype control (A24172,5 μ l/Test, blue line). Non-fluorescently stained cells were used as blank control (red line).



Flow cytometry: 1X10⁶ LNCaP cells were surface-stained with PE Rabbit IgG isotype control (A24172,5 μ l/Test, left) or PE Rabbit anti-Human TMPRSS2 mAb (A27410,5 μ l/Test, right).