

APC Rabbit anti-Human CD196/CCR6 mAb

Catalog No.: A27385

Basic Information

Observed MW

Calculated MW

42kDa

Category

Primary antibody

Applications

FC

Cross-Reactivity

Human

CloneNo number

ARC64483

Conjugate

APC. Ex:650nm. Em:660nm.

Background

This gene encodes a member of the beta chemokine receptor family, which is predicted to be a seven transmembrane protein similar to G protein-coupled receptors. The gene is preferentially expressed by immature dendritic cells and memory T cells. The ligand of this receptor is macrophage inflammatory protein 3 alpha (MIP-3 alpha). This receptor has been shown to be important for B-lineage maturation and antigen-driven B-cell differentiation, and it may regulate the migration and recruitment of dendritic and T cells during inflammatory and immunological responses. Alternatively spliced transcript variants that encode the same protein have been described for this gene.

Recommended Dilutions

FC 5 µl per 10⁶ cells in
100 µl volume

Immunogen Information

Gene ID

1235

Swiss Prot

P51684

Immunogen

Recombinant fusion protein containing a sequence corresponding to amino acids 1-40 of human CD196/CCR6 (NP_004358.2).

Synonyms

BN-1; DCR2; DRY6; CCR-6; CD196; CKRL3; GPR29; CKR-L3; CMKBR6; GPRCY4; STRL22; CC-CKR-6; C-C CKR-6

Contact

☎ | 400-999-6126

✉ | cn.market@abclonal.com.cn

🌐 | www.abclonal.com.cn

Product Information

Source

Rabbit

Isotype

IgG

Purification

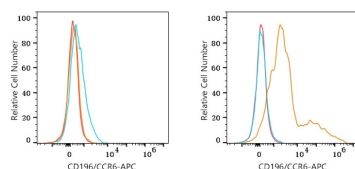
Affinity purification

Storage

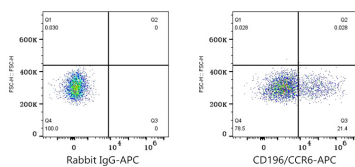
Store at 2-8°C. Avoid freeze.

Buffer: PBS with 0.09% Sodium azide, 0.2% BSA, pH7.3.

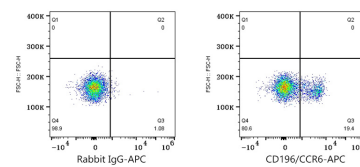
Validation Data



Flow cytometry: 1×10^6 293T cells (negative control, left) and 293T (Transfection, right) cells were surface-stained with APC Rabbit anti-Human CD196/CCR6 mAb (A27385, 5 μ l/Test, orange line) or APC Rabbit IgG isotype control (A24173, 5 μ l/Test, blue line). Non-fluorescently stained cells were used as blank control (red line).



Flow cytometry: 1×10^6 293T (Transfection) cells were surface-stained with APC Rabbit IgG isotype control (A24173, 5 μ l/Test, left) or APC Rabbit anti-Human CD196/CCR6 mAb (A27385, 5 μ l/Test, right).



Flow cytometry: 1×10^6 Human PBMC were surface-stained with APC Rabbit IgG isotype control (A24173, 5 μ l/Test, left) or APC Rabbit anti-Human CD196/CCR6 mAb (A27385, 5 μ l/Test, right). Cells in the Lymphocytes gate were used for analysis.