

ABflo® 450 Rabbit anti-Mouse CD25 mAb

Catalog No.: A27354

Basic Information

Observed MW

Calculated MW

31kDa

Category

Primary antibody

Applications

FC

Cross-Reactivity

Mouse

CloneNo number

ARC54525

Conjugate

ABflo® 450. Ex:406nm. Em:445nm.

Recommended Dilutions

FC 5 µl per 10⁶ cells in
100 µl volume

Background

Enables interleukin-2 binding activity and interleukin-2 receptor activity. Acts upstream of or within several processes, including Notch signaling pathway; activation-induced cell death of T cells; and regulation of T cell proliferation. Located in external side of plasma membrane. Is expressed in bone marrow. Used to study Sjogren's syndrome and inflammatory bowel disease. Human ortholog(s) of this gene implicated in immunodeficiency 41; lymphopenia; multiple sclerosis; type 1 diabetes mellitus; and type 1 diabetes mellitus 10. Orthologous to human IL2RA (interleukin 2 receptor subunit alpha).

Immunogen Information

Gene ID

16184

Swiss Prot

P01590

Immunogen

Recombinant protein (or fragment). This information is considered to be commercially sensitive.

Synonyms

CD25; IL2r; Ly-43

Contact

 | 400-999-6126

 | cn.market@abclonal.com.cn

 | www.abclonal.com.cn

Product Information

Source

Rabbit

Isotype

IgG

Purification

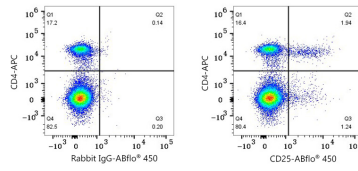
Affinity purification

Storage

Store at 2-8°C. Avoid freeze.

Buffer: PBS with 0.09% Sodium azide, 0.2% BSA, pH7.3.

Validation Data



Flow cytometry: 1×10^6 C57BL/6 mouse splenocytes were surface-stained with APC Rabbit anti-Mouse CD4 mAb (A25934, 5 μ l/Test) and ABflo® 450 Rabbit IgG isotype control (A27451, 5 μ l/Test, left) or ABflo® 450 Rabbit anti-Mouse CD25 mAb (A27354, 5 μ l/Test, right).