

# PE/Cyanine7 Rabbit anti-Mouse CD24 mAb

Catalog No.: A27350

## Basic Information

### Observed MW

### Calculated MW

8kDa

### Category

Primary antibody

### Applications

FC

### Cross-Reactivity

Mouse

### CloneNo number

ARC66569

### Conjugate

PE-Cy7. Ex:565nm. Em:778nm.

## Background

CD24, also known as heat stable antigen HSA, is a P-selectin ligand involved in adhesion. It is a GPI-anchored glycoprotein expressed on many types of cells, including hematopoietic cells, neural cells, and epithelial cells. CD24 is widely used to delineate stages of lymphocyte development. It also binds to Siglec-10 in humans or Siglec-G in mice. CD24 is frequently used as a marker to identify and isolate cancer stem cells in various cancer types.

## Recommended Dilutions

FC ≤0.5 µg per million cells  
in 100 µl volume

## Immunogen Information

### Gene ID

12484

### Swiss Prot

P24807

### Immunogen

Recombinant protein (or fragment). This information is considered to be commercially sensitive.

### Synonyms

HSA; Cd24; Ly-52; nectadrin

## Contact

☎ | 400-999-6126

✉ | [cn.market@abclonal.com.cn](mailto:cn.market@abclonal.com.cn)

🌐 | [www.abclonal.com.cn](http://www.abclonal.com.cn)

## Product Information

### Source

Rabbit

### Isotype

IgG

### Purification

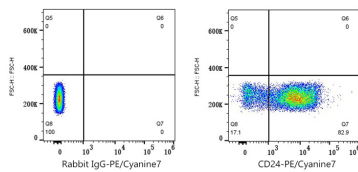
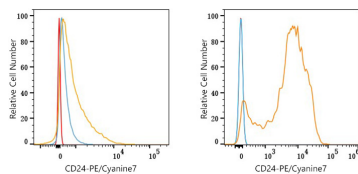
Affinity purification

### Storage

Store at 2-8°C. Avoid freeze.

Buffer: PBS with 0.09% Sodium azide, 0.2% BSA, pH7.3.

## Validation Data



Flow cytometry:  $1 \times 10^6$  RAW264.7 cells (negative control, left) and C57BL/6 mouse splenocytes (right) were surface-stained with PE/Cyanine7 Rabbit anti-Mouse CD24 mAb (A27350, 0.5  $\mu$ g, orange line) or PE/Cyanine7 Rabbit IgG isotype control (5  $\mu$ l/Test, blue line). Non-fluorescently stained cells were used as blank control (red line).

Flow cytometry:  $1 \times 10^6$  C57BL/6 mouse splenocytes were surface-stained with PE/Cyanine7 Rabbit IgG isotype control (5  $\mu$ l/Test, left) or PE/Cyanine7 Rabbit anti-Mouse CD24 mAb (A27350, 0.5  $\mu$ g, right).