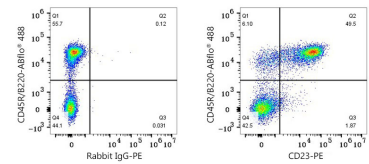
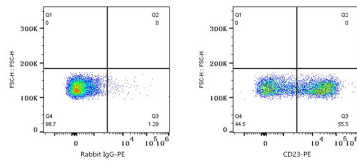




## Validation Data



Flow cytometry:  $1 \times 10^6$  C57BL/6 mouse splenocytes were surface-stained with PE Rabbit IgG isotype control (A24172, 5  $\mu$ l/Test, left) or PE Rabbit anti-Mouse CD23 mAb (A27347, 0.25  $\mu$ g, right).

Flow cytometry:  $1 \times 10^6$  C57BL/6 mouse splenocytes were surface-stained with ABflo® 488 Rat anti-Mouse CD45R/B220 mAb (A27571, 5  $\mu$ l/Test) and PE Rabbit IgG isotype control (A24172, 5  $\mu$ l/Test, left) or PE Rabbit anti-Mouse CD23 mAb (A27347, 0.25  $\mu$ g, right).