

PE Rabbit anti-Mouse CD11a mAb

Catalog No.: A27336

Basic Information

Observed MW

Calculated MW
128kDa

Category
Primary antibody

Applications
FC

Cross-Reactivity
Mouse

CloneNo number
ARC67614

Conjugate
PE. Ex:565nm. Em:574nm.

Background

Predicted to enable ICAM-3 receptor activity and cell adhesion molecule binding activity. Involved in cell-cell adhesion. Acts upstream of or within several processes, including activated T cell proliferation; positive regulation of T cell proliferation; and positive regulation of calcium-mediated signaling. Located in cell-cell junction; external side of plasma membrane; and immunological synapse. Is expressed in heart; hemolymphoid system; and vault of skull. Orthologous to human ITGAL (integrin subunit alpha L).

Recommended Dilutions

FC 5 μ l per 10^6 cells in
100 μ l volume

Immunogen Information

Gene ID	Swiss Prot
16408	P24063

Immunogen

Recombinant protein (or fragment). This information is considered to be commercially sensitive.

Synonyms

Cd11a; LFA-1; Ly-15; Ly-21; (p180); LFA-1A

Contact

	400-999-6126
	cn.market@abclonal.com.cn
	www.abclonal.com.cn

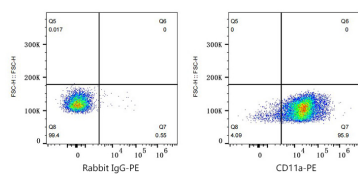
Product Information

Source	Isotype	Purification
Rabbit	IgG	Affinity purification

Storage

Store at 2-8°C. Avoid freeze.
Buffer: PBS with 0.09% Sodium azide, 0.2% BSA, pH7.3.

Validation Data



Flow cytometry: 1×10^6 C57BL/6 mouse splenocytes were surface-stained with PE Rabbit IgG isotype control (A24172, 5 μ l/Test, left) or PE Rabbit anti-Mouse CD11a mAb (A27336, 5 μ l/Test, right).