

[KO Validated] SIRT1 Rabbit mAb

Catalog No.: A27256 **KO** **Validated** **Recombinant**

Basic Information

Observed MW

110 kDa/120 kDa

Calculated MW

82 kDa

Category

Primary antibody

Applications

WB,IF/ICC,IF-P,IHC-P,FC (intra),ELISA

Cross-Reactivity

Human, Mouse, Rat

CloneNo number

ARC3323

Background

This gene encodes a member of the sirtuin family of proteins, homologs to the yeast Sir2 protein. Members of the sirtuin family are characterized by a sirtuin core domain and grouped into four classes. The functions of human sirtuins have not yet been determined; however, yeast sirtuin proteins are known to regulate epigenetic gene silencing and suppress recombination of rDNA. Studies suggest that the human sirtuins may function as intracellular regulatory proteins with mono-ADP-ribosyltransferase activity. The protein encoded by this gene is included in class I of the sirtuin family. Alternative splicing results in multiple transcript variants.

Recommended Dilutions

WB 1:1000 - 1:4000**IF/ICC** 1:100 - 1:400**IF-P** 1:100 - 1:400**IHC-P** 1:100 - 1:500 FC
(intra)1:50 - 1:200**ELISA** Recommended starting
concentration is 1 µg/mL.
Please optimize the
concentration based on
your specific assay
requirements.

Immunogen Information

Gene ID

23411

Swiss Prot

Q96EB6

Immunogen

Recombinant protein (or fragment). This information is considered to be commercially sensitive.

Synonyms

SIR2; SIR2L1; SIR2alpha

Product Information

Source

Rabbit

Isotype

IgG

Purification

Affinity purification

Storage

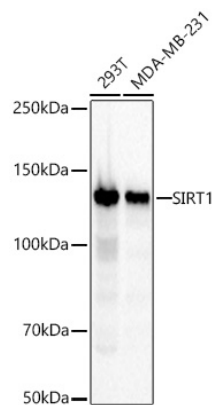
Store at -20°C. Avoid freeze / thaw cycles.

Buffer: PBS with 0.02% Sodium azide, 0.05% BSA, 50% glycerol, pH7.3.

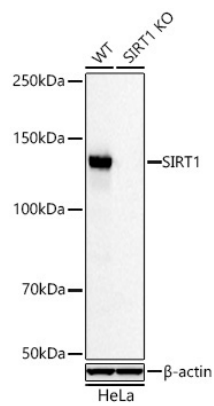
Contact

 | 400-999-6126 | cn.market@abclonal.com.cn | www.abclonal.com.cn

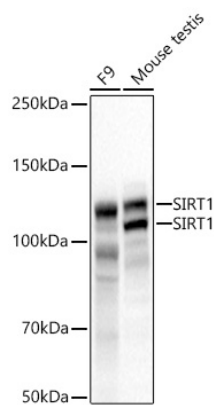
Validation Data



Western blot analysis of various lysates using [KO Validated] SIRT1 Rabbit mAb (A27256) at 1:1000 dilution incubated overnight at 4°C.
Secondary antibody: HRP-conjugated Goat anti-Rabbit IgG (H+L) (AS014) at 1:10000 dilution.
Lysates/proteins: 25 µg per lane.
Blocking buffer: 3% nonfat dry milk in TBST.
Detection: ECL Basic Kit (RM00020).
Exposure time: 20s.

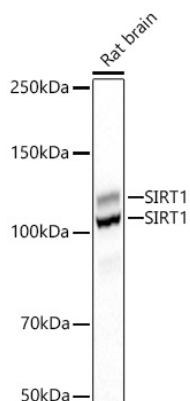


Western blot analysis of lysates from wild type (WT) and SIRT1 knockout (KO) HeLa cells using [KO Validated] SIRT1 Rabbit mAb (A27256) at 1:1000 dilution incubated overnight at 4°C.
Secondary antibody: HRP-conjugated Goat anti-Rabbit IgG (H+L) (AS014) at 1:10000 dilution.
Lysates/proteins: 25 µg per lane.
Blocking buffer: 3% nonfat dry milk in TBST.
Detection: ECL Basic Kit (RM00020).
Exposure time: 20s.



Western blot analysis of various lysates using [KO Validated] SIRT1 Rabbit mAb (A27256) at 1:1000 dilution incubated overnight at 4°C.
Secondary antibody: HRP-conjugated Goat anti-Rabbit IgG (H+L) (AS014) at 1:10000 dilution.
Lysates/proteins: 25 µg per lane.
Blocking buffer: 3% nonfat dry milk in TBST.
Detection: ECL Basic Kit (RM00020).
Exposure time: 10s.

Validation Data



Western blot analysis of lysates from Rat brain using [KO Validated] SIRT1 Rabbit mAb (A27256) at 1:1000 dilution incubated overnight at 4°C.

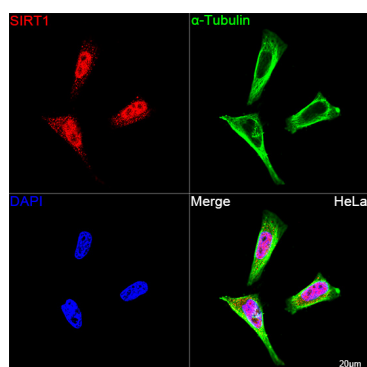
Secondary antibody: HRP-conjugated Goat anti-Rabbit IgG (H+L) (AS014) at 1:10000 dilution.

Lysates/proteins: 25 µg per lane.

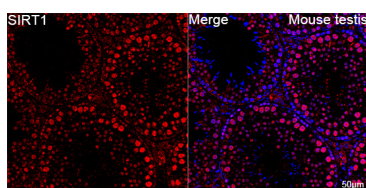
Blocking buffer: 3% nonfat dry milk in TBST.

Detection: ECL Basic Kit (RM00020).

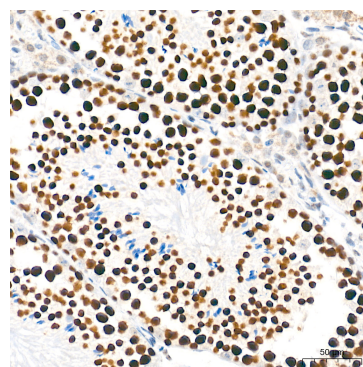
Exposure time: 45s.



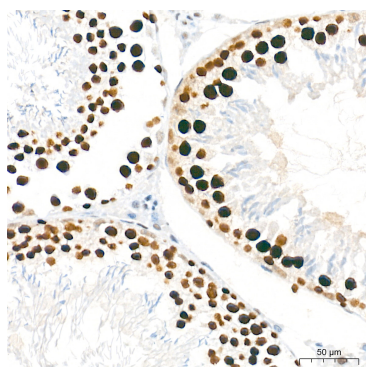
Confocal imaging of HeLa cells using [KO Validated] SIRT1 Rabbit mAb (A27256, dilution 1:100) followed by a further incubation with Cy3 Goat Anti-Rabbit IgG (H+L) (AS007, dilution 1:500) (Red). The cells were counterstained with α-Tubulin Mouse mAb (AC012, dilution 1:400) followed by incubation with ABflo® 488-conjugated Goat Anti-Mouse IgG (H+L) Ab (AS076, dilution 1:500) (Green). DAPI was used for nuclear staining (Blue). Objective: 100x.



Confocal imaging of paraffin-embedded Mouse testis tissue using [KO Validated] SIRT1 Rabbit mAb (A27256, dilution 1:100) followed by a further incubation with Cy3 Goat Anti-Rabbit IgG (H+L) (AS007, dilution 1:500) (Red). DAPI was used for nuclear staining (Blue). High pressure antigen retrieval performed with 0.01M Citrate Buffer (pH 6.0) prior to IF staining. Objective: 40x.



Immunohistochemistry analysis of paraffin-embedded Mouse testis tissue using [KO Validated] SIRT1 Rabbit mAb (A27256) at a dilution of 1:500 (40x lens). High pressure antigen retrieval performed with 0.01M Tris-EDTA Buffer (pH 9.0) prior to IHC staining.



Immunohistochemistry analysis of paraffin-embedded Rat testis tissue using [KO Validated] SIRT1 Rabbit mAb (A27256) at a dilution of 1:500 (40x lens). High pressure antigen retrieval performed with 0.01M Tris-EDTA Buffer (pH 9.0) prior to IHC staining.