

# ABflo® 488 Rabbit anti-Human/Monkey CD18 mAb

Catalog No.: A27215

## Basic Information

### Observed MW

### Calculated MW

85kDa

### Category

Primary antibody

### Applications

FC

### Cross-Reactivity

Human, Cynomolgus

### CloneNo number

ARC72097

### Conjugate

ABflo® 488. Ex:491nm. Em:516nm.

## Recommended Dilutions

FC 5 µl per 10<sup>6</sup> cells in  
100 µl volume

## Background

This gene encodes an integrin beta chain, which combines with multiple different alpha chains to form different integrin heterodimers. Integrins are integral cell-surface proteins that participate in cell adhesion as well as cell-surface mediated signalling. The encoded protein plays an important role in immune response and defects in this gene cause leukocyte adhesion deficiency. Alternative splicing results in multiple transcript variants.

## Immunogen Information

### Gene ID

Hu 3689 Cyon 101925124

### Swiss Prot

P05107

### Immunogen

Recombinant protein (or fragment). This information is considered to be commercially sensitive.

### Synonyms

LAD; CD18; MF17; MFI7; LCAMB; LFA-1; MAC-1

## Contact

☎ | 400-999-6126

✉ | [cn.market@abclonal.com.cn](mailto:cn.market@abclonal.com.cn)

🌐 | [www.abclonal.com.cn](http://www.abclonal.com.cn)

## Product Information

### Source

Rabbit

### Isotype

IgG

### Purification

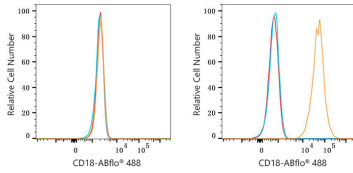
Affinity purification

### Storage

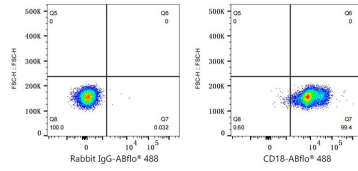
Store at 2-8°C. Avoid freeze.

Buffer: PBS with 0.09% Sodium azide, 0.2% BSA, pH7.3.

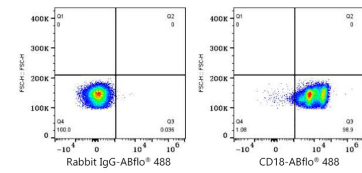
## Validation Data



Flow cytometry:  $1 \times 10^6$  HeLa cells (negative control, left) and THP-1 cells (right) were surface-stained with ABflo® 488 Rabbit anti-Human/Monkey CD18 mAb (A27215, 5  $\mu$ l/Test, orange line) or ABflo® 488 Rabbit IgG isotype control (A22069, 5  $\mu$ l/Test, blue line). Non-fluorescently stained cells were used as blank control (red line).



Flow cytometry:  $1 \times 10^6$  Human PBMC were surface-stained with ABflo® 488 Rabbit IgG isotype control (A22069, 5  $\mu$ l/Test, left) or ABflo® 488 Rabbit anti-Human/Monkey CD18 mAb (A27215, 5  $\mu$ l/Test, right). Cells in the lymphocyte gate were used for analysis.



Flow cytometry:  $1 \times 10^6$  Cynomolgus PBMC were surface-stained with ABflo® 488 Rabbit IgG isotype control (A22069, 5  $\mu$ l/Test, left) or ABflo® 488 Rabbit anti-Human/Monkey CD18 mAb (A27215, 5  $\mu$ l/Test, right). Cells in the lymphocyte gate were used for analysis.