

LC3A/LC3B Rabbit PolymAb®

Catalog No.: A27200PM

Basic Information

Observed MW

14kDa/16kDa

Calculated MW

14kDa

Category

Primary antibody

Applications

WB, IHC-P, IF/ICC, ELISA

Cross-Reactivity

Human, Mouse, Rat

Background

MAP1A and MAP1B are microtubule-associated proteins which mediate the physical interactions between microtubules and components of the cytoskeleton. MAP1A and MAP1B each consist of a heavy chain subunit and multiple light chain subunits. The protein encoded by this gene is one of the light chain subunits and can associate with either MAP1A or MAP1B. Two transcript variants encoding different isoforms have been found for this gene. The expression of variant 1 is suppressed in many tumor cell lines, suggesting that may be involved in carcinogenesis.

Recommended Dilutions

WB 1:10000 - 1:20000

IHC-P 1:2000 - 1:8000

IF/ICC 1:200 - 1:800

ELISA Recommended starting concentration is 1 µg/mL. Please optimize the concentration based on your specific assay requirements.

Immunogen Information

Gene ID

84557/81631

Swiss Prot

Q9GZQ8/Q9H492

Immunogen

Synthetic peptide. This information is considered to be commercially sensitive.

Synonyms

LC3; LC3A; ATG8E; MAP1ALC3; MAP1BLC3; LC3A/B; LC3B

Contact

☎ | 400-999-6126

✉ | cn.market@abclonal.com.cn

🌐 | www.abclonal.com.cn

Product Information

Source

Rabbit

Isotype

IgG

Purification

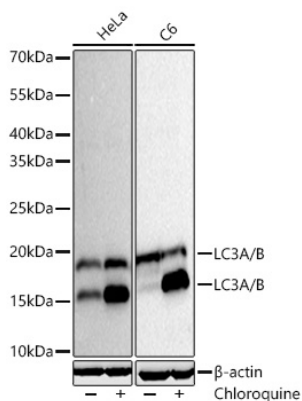
Affinity purification

Storage

Store at -20°C. Avoid freeze / thaw cycles.

Buffer: PBS with 0.09% Sodium azide, 0.05% BSA, 50% glycerol, pH7.3.

Validation Data



Western blot analysis of various lysates using LC3A/LC3B Rabbit PolymAb® (A27200PM) at 1:10000 dilution incubated at room temperature for 1.5 hours. HeLa and C6 cells were treated with Chloroquine (50 μ M) at 37°C for 20 hours.

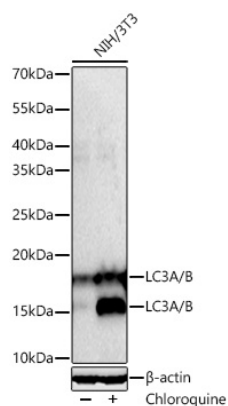
Secondary antibody: HRP-conjugated Goat anti-Rabbit IgG (H+L) (AS014) at 1:10000 dilution.

Lysates/proteins: 30 μ g per lane.

Blocking buffer: 3% nonfat dry milk in TBST.

Detection: ECL Basic Kit (RM00020).

Exposure time: 45s.



Western blot analysis of lysates from NIH/3T3 cells using LC3A/LC3B Rabbit PolymAb® (A27200PM) at 1:10000 dilution incubated at room temperature for 1.5 hours. NIH/3T3 cells were treated with Chloroquine (50 μ M) at 37°C for 20 hours.

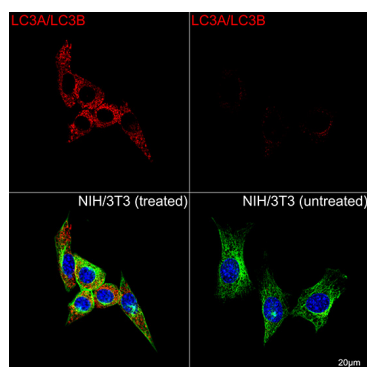
Secondary antibody: HRP-conjugated Goat anti-Rabbit IgG (H+L) (AS014) at 1:10000 dilution.

Lysates/proteins: 30 μ g per lane.

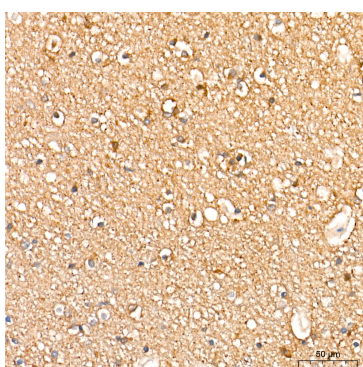
Blocking buffer: 3% nonfat dry milk in TBST.

Detection: ECL Basic Kit (RM00020).

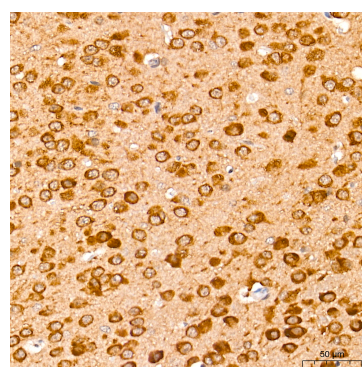
Exposure time: 90s.



Confocal imaging of NIH/3T3 cells (treated with chloroquine) and NIH/3T3 cells (untreated) using LC3A/LC3B Rabbit PolymAb® (A27200PM, dilution 1:200) followed by a further incubation with Cy3 Goat Anti-Rabbit IgG (H+L) (AS007, dilution 1:500) (Red). The cells were counterstained with α -Tubulin Mouse mAb (AC012, dilution 1:400) followed by incubation with ABflo® 488-conjugated Goat Anti-Mouse IgG (H+L) Ab (AS076, dilution 1:500) (Green). DAPI was used for nuclear staining (Blue). Objective: 100x.

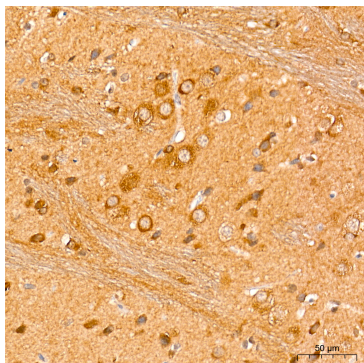


Immunohistochemistry analysis of paraffin-embedded Human brain tissue using LC3A/LC3B Rabbit PolymAb® (A27200PM) at a dilution of 1:5000 (40x lens). High pressure antigen retrieval performed with 0.01M Citrate Buffer (pH 6.0) prior to IHC staining.



Immunohistochemistry analysis of paraffin-embedded Mouse brain tissue using LC3A/LC3B Rabbit PolymAb® (A27200PM) at a dilution of 1:5000 (40x lens). High pressure antigen retrieval performed with 0.01M Citrate Buffer (pH 6.0) prior to IHC staining.

Validation Data



Immunohistochemistry analysis of paraffin-embedded Rat brain tissue using LC3A/LC3B Rabbit PolymAb® (A27200PM) at a dilution of 1:5000 (40x lens). High pressure antigen retrieval performed with 0.01M Citrate Buffer (pH 6.0) prior to IHC staining.