

## [KD Validated] LAP3 Rabbit mAb

Catalog No.: A27188 **Recombinant**

### Basic Information

#### Observed MW

56kDa

#### Calculated MW

56kDa

#### Category

Primary antibody

#### Applications

WB, IHC-P, ELISA

#### Cross-Reactivity

Human, Mouse, Rat

#### CloneNo number

ARC71182

### Background

Predicted to enable peptidase activity. Predicted to be involved in proteolysis. Located in cytosol; midbody; and nucleoplasm.

### Recommended Dilutions

**WB** 1:5000 - 1:20000

**IHC-P** 1:2000 - 1:20000

**ELISA** Recommended starting concentration is 1 µg/mL. Please optimize the concentration based on your specific assay requirements.

### Immunogen Information

#### Gene ID

51056

#### Swiss Prot

P28838

#### Immunogen

Recombinant protein (or fragment). This information is considered to be commercially sensitive.

#### Synonyms

LAP; PEPS; LAPEP; HEL-S-106

### Contact

 | 400-999-6126

 | [cn.market@abclonal.com.cn](mailto:cn.market@abclonal.com.cn)

 | [www.abclonal.com.cn](http://www.abclonal.com.cn)

### Product Information

#### Source

Rabbit

#### Isotype

IgG

#### Purification

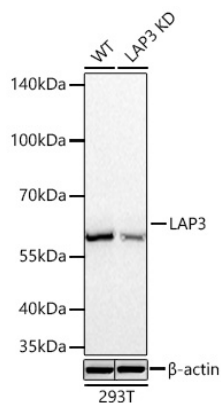
Affinity purification

#### Storage

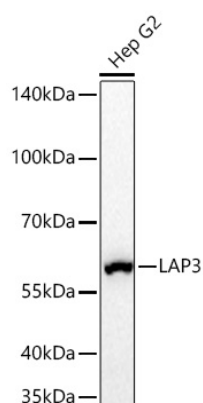
Store at -20°C. Avoid freeze / thaw cycles.

Buffer: PBS with 0.09% Sodium azide, 0.05% BSA, 50% glycerol, pH7.3.

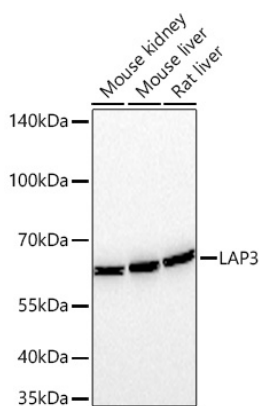
## Validation Data



Western blot analysis of lysates from wild type (WT) and LAP3 knockdown (KD) 293T cells using [KD Validated] LAP3 Rabbit mAb (A27188) at 1:10000 dilution incubated overnight at 4°C.  
Secondary antibody: HRP-conjugated Goat anti-Rabbit IgG (H+L) (AS014) at 1:10000 dilution.  
Lysates/proteins: 25  $\mu$ g per lane.  
Blocking buffer: 3% nonfat dry milk in TBST.  
Detection: ECL Basic Kit (RM00020).  
Exposure time: 30s.



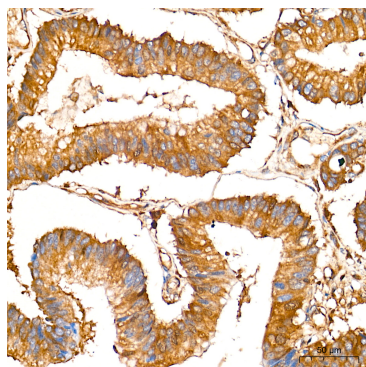
Western blot analysis of lysates from Hep G2 cells using [KD Validated] LAP3 Rabbit mAb (A27188) at 1:10000 dilution incubated overnight at 4°C.  
Secondary antibody: HRP-conjugated Goat anti-Rabbit IgG (H+L) (AS014) at 1:10000 dilution.  
Lysates/proteins: 25  $\mu$ g per lane.  
Blocking buffer: 3% nonfat dry milk in TBST.  
Detection: ECL Basic Kit (RM00020).  
Exposure time: 30s.



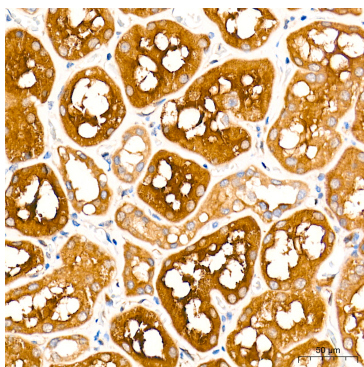
Western blot analysis of various lysates using [KD Validated] LAP3 Rabbit mAb (A27188) at 1:10000 dilution incubated overnight at 4°C.  
Secondary antibody: HRP-conjugated Goat anti-Rabbit IgG (H+L) (AS014) at 1:10000 dilution.  
Lysates/proteins: 25  $\mu$ g per lane.  
Blocking buffer: 3% nonfat dry milk in TBST.  
Detection: ECL Basic Kit (RM00020).  
Exposure time: 45s.

## Validation Data

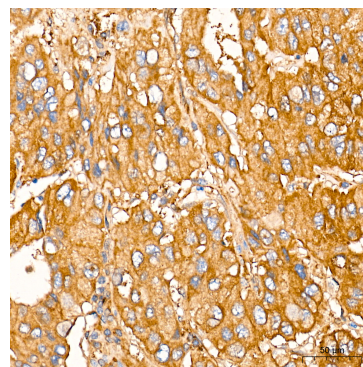
---



Immunohistochemistry analysis of paraffin-embedded Human colon carcinoma tissue using [KD Validated] LAP3 Rabbit mAb (A27188) at a dilution of 1:10000 (40x lens). High pressure antigen retrieval performed with 0.01M Tris-EDTA Buffer (pH 9.0) prior to IHC staining.



Immunohistochemistry analysis of paraffin-embedded Human kidney tissue using [KD Validated] LAP3 Rabbit mAb (A27188) at a dilution of 1:10000 (40x lens). High pressure antigen retrieval performed with 0.01M Tris-EDTA Buffer (pH 9.0) prior to IHC staining.



Immunohistochemistry analysis of paraffin-embedded Human liver cancer tissue using [KD Validated] LAP3 Rabbit mAb (A27188) at a dilution of 1:10000 (40x lens). High pressure antigen retrieval performed with 0.01M Tris-EDTA Buffer (pH 9.0) prior to IHC staining.