

APC Rabbit anti-Mouse KLRG1/MAFA mAb

Catalog No.: A27186

Basic Information

Observed MW

Calculated MW

21kDa

Category

Primary antibody

Applications

FC

Cross-Reactivity

Mouse

CloneNo number

ARC67806

Conjugate

APC. Ex:650nm. Em:660nm.

Background

Predicted to enable carbohydrate binding activity. Predicted to act upstream of or within cell surface receptor signaling pathway. Predicted to be located in intracellular membrane-bounded organelle. Orthologous to human KLRG1 (killer cell lectin like receptor G1).

Recommended Dilutions

FC 5 µl per 10⁶ cells in
100 µl volume

Immunogen Information

Gene ID

50928

Swiss Prot

O88713

Immunogen

Recombinant protein (or fragment). This information is considered to be commercially sensitive.

Synonyms

MAFA; 2F1-Ag; MAFA-L

Contact

 | 400-999-6126

 | cn.market@abclonal.com.cn

 | www.abclonal.com.cn

Product Information

Source

Rabbit

Isotype

IgG

Purification

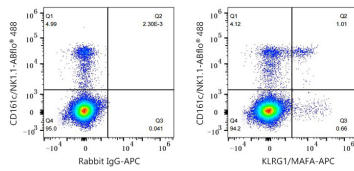
Affinity purification

Storage

Store at 2-8°C. Avoid freeze.

Buffer: PBS with 0.09% Sodium azide, 0.2% BSA, pH7.3.

Validation Data



Flow cytometry: 1×10^6 C57BL/6 mouse splenocytes were surface-stained with ABflo® 488 Rabbit anti-Mouse CD161c/NK1.1 mAb (A24922, 5 μ l/Test) and APC Rabbit IgG isotype control (A24173, 5 μ l/Test, left) or APC Rabbit anti-Mouse KLRG1/MAFA mAb (A27186, 5 μ l/Test, right). Cells in the lymphocyte gate were used for analysis.