

# ABflo® 647 Rabbit anti-Mouse I-A mAb

Catalog No.: A27183

## Basic Information

### Observed MW

### Calculated MW

30kDa

### Category

Primary antibody

### Applications

FC

### Cross-Reactivity

Mouse

### CloneNo number

ARC71894

### Conjugate

ABflo® 647. Ex:648nm. Em:664nm.

## Background

Enables several functions, including peptide antigen binding activity; protein antigen binding activity; and toxic substance binding activity. Involved in several processes, including B cell affinity maturation; cellular response to interferon-gamma; and positive regulation of T-helper 1 type immune response. Acts upstream of or within antigen processing and presentation of exogenous peptide antigen via MHC class II and immune response. Located in Golgi apparatus; endosome; and external side of plasma membrane. Is integral component of membrane. Part of MHC class II protein complex. Is expressed in lung; metanephros; and thymus primordium. Orthologous to human HLA-DQB2 (major histocompatibility complex, class II, DQ beta 2).

## Recommended Dilutions

FC 5 µl per 10<sup>6</sup> cells in  
100 µl volume

## Immunogen Information

### Gene ID

14961

### Swiss Prot

P14483

### Immunogen

Recombinant protein (or fragment). This information is considered to be commercially sensitive.

### Synonyms

H-2I; I-Ad; -Ed; I-Eb and I-Ek MHC class II alloantigens; Ia Ag; MHC II

## Contact

☎ | 400-999-6126

✉ | [cn.market@abclonal.com.cn](mailto:cn.market@abclonal.com.cn)

🌐 | [www.abclonal.com.cn](http://www.abclonal.com.cn)

## Product Information

### Source

Rabbit

### Isotype

IgG

### Purification

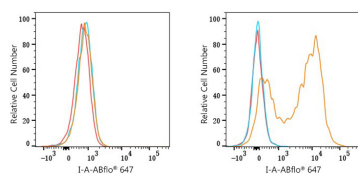
Affinity purification

### Storage

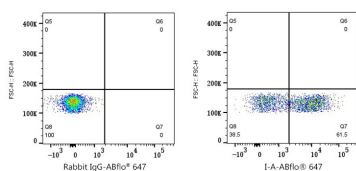
Store at 2-8°C. Avoid freeze.

Buffer: PBS with 0.09% Sodium azide, 0.2% BSA, pH7.3.

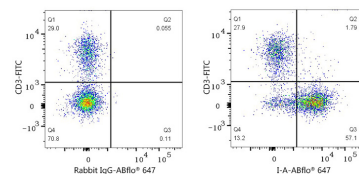
## Validation Data



Flow cytometry:  $1 \times 10^6$  NIH/3T3 cells (negative control, left) and C57BL/6 mouse splenocytes (right) were surface-stained with ABflo® 647 Rabbit anti-Mouse I-A mAb (A27183, 5  $\mu$ l/Test, orange line) or ABflo® 647 Rabbit IgG isotype control (A22070, 5  $\mu$ l/Test, blue line). Non-fluorescently stained cells were used as blank control (red line).



Flow cytometry:  $1 \times 10^6$  C57BL/6 mouse splenocytes were surface-stained with ABflo® 647 Rabbit IgG isotype control (A22070, 5  $\mu$ l/Test, left) or ABflo® 647 Rabbit anti-Mouse I-A mAb (A27183, 5  $\mu$ l/Test, right).



Flow cytometry:  $1 \times 10^6$  C57BL/6 mouse splenocytes were surface-stained with FITC anti-mouse CD3 Antibody (5  $\mu$ l/Test) and ABflo® 647 Rabbit IgG isotype control (A22070, 5  $\mu$ l/Test, left) or ABflo® 647 Rabbit anti-Mouse I-A mAb (A27183, 5  $\mu$ l/Test, right). Cells in the lymphocyte gate were used for analysis.